




### Professional Solutions - Unrivalled Value

Articulating arms hold screen 3.8" from wall and extend up to 15.5" for variable viewing angles. Smooth tilt adjustments of 15° forward and 5° back with a locking knob for a variety of viewing angles. 6° side to side roll for perfect screen positioning. Makes a secure installation quick and easy, simply hang the screen and turn the pre-assembled securing screws to lock in place. Integrated cable management for clean look.

 26"-46" / 56cm-117cm

 100 LB / 45.4 KG

#### ■ Universal Design / Vesa Compatible

*Fits any hole pattern up to 454x401mm (17.9"x15.8").*

#### ■ Extendable

*Extends from 3.8" to 15.5"*

#### ■ Screen Size

*Fits most 26" to 46" flat panel screens weighing up to 100lb (45.4kg).*

#### ■ Roll Adjustment

*6° side to side roll feature (without tools).*

#### ■ Easy Installation

*Pre-assembled securing screws makes installation fast and easy.*

#### ■ Cable Management

*Integrated cable management for clean look.*

#### ■ Included Hardware

*Pre-sorted hardware pack for easy component selection and installation (hardware for installation to wood studs or concrete surfaces included).*

#### Functional Specifications

**Depth from wall:** 3.8" (96mm)

**Swivel:** 55°

**Tilt:** +15°/-5°

**Roll:** 6°

**Mounting Surfaces:** Wood studs, concrete & cinder block (with included hardware). Metal Studs (requires accessories).

**Max Mounting Pattern:**

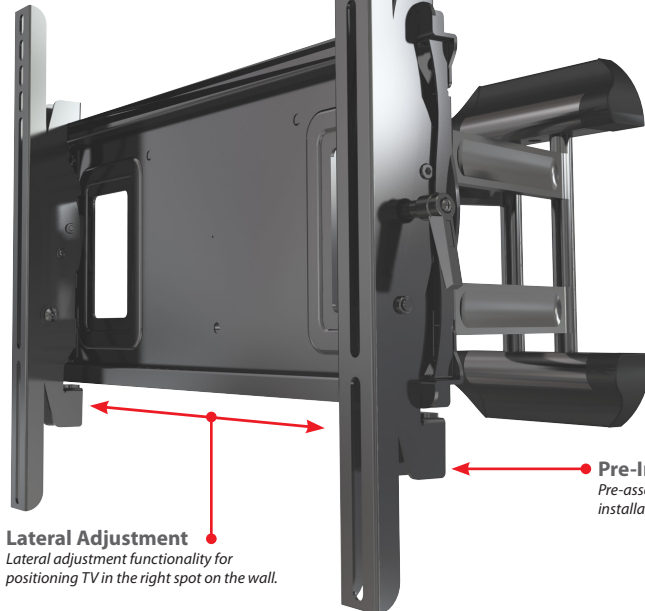
454.2mm (17.9") width  
401mm (15.8") height

**Load Capacity:** 100 LB / 45.4 KG

**Warranty:** Limited 10 Years

#### Universal Design

*Fits any hole pattern up to 454x401mm (17.9"x15.8"). Max VESA hole pattern 400x400mm.*



**Lateral Adjustment**  
*Lateral adjustment functionality for positioning TV in the right spot on the wall.*



**Full Range of Motion**  
*3 pivot joints for variable viewing angles.*



**Tilt**  
*15° forward and 5° back tilt for optimal viewing angles.*



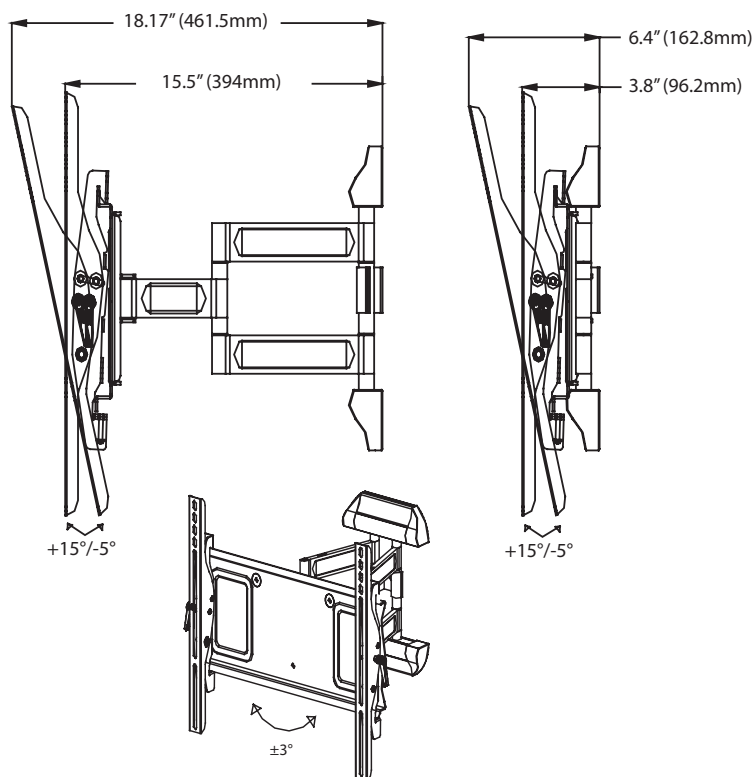
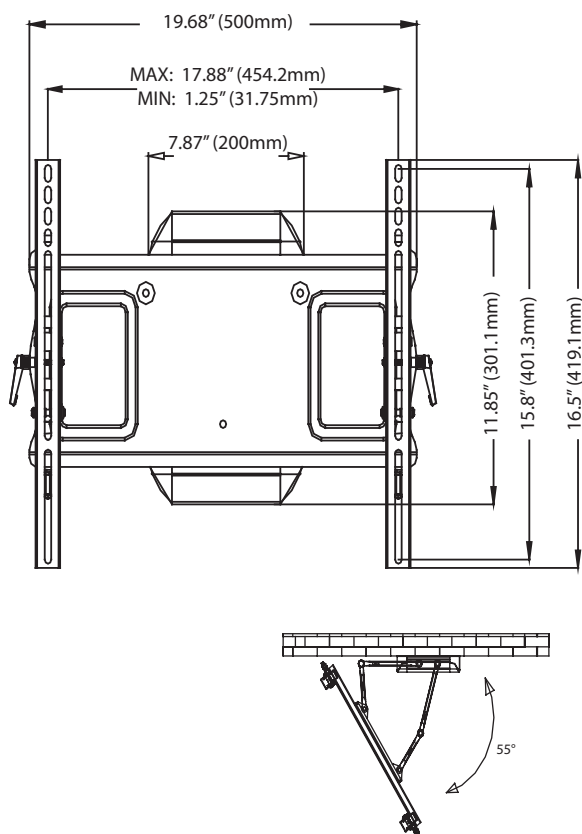
**Mounting Hardware**  
*Complete set of screen mounting hardware, labeled for ease of use and ready to go.*



# Full Motion Articulating Wall Mount

For 26" to 46" (56-117cm) LCD, LED and Plasma TV's

A46F (BLACK)



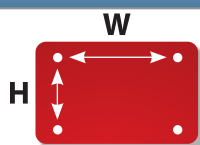
## Product Specifications

PRODUCT WEIGHT	LOAD CAPACITY	COLORS	FINISH
17.6lb (8kg)	100lb (45.4kg)	Black	Scratch resistant powder coating

## Package Specifications

PACKAGE SIZE (WxHxD)	SHIP WEIGHT	UPC CODE	PACKAGE CONTENTS
21" x 14.4" x 5.5" (534 x 366 x 140 mm)	21.5lb (9.8kg)	A46F (Black) 0815885010453	Mount, wall and screen mounting hardware, product manual.

## Mounting Interface



Universal	
Min	Max
W 31mm	454mm
H 31mm	401mm

VESA											
W	75mm	100mm	200mm	200mm	300mm	300mm	400mm	400mm	400mm	400mm	400mm
H	75mm	100mm	100mm	200mm	200mm	300mm	200mm	300mm	200mm	300mm	400mm

## Accessories

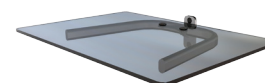
### On-wall Cable Management



- WA1 - 1 Shelf
- WA2 - 2 Shelves
- WA3 - 3 Shelves

Component shelf and on-wall cable routing system. Hides cables inside internal channels for a clean look.

### Shelving



- WF1 - 1 Shelf

Single-stud mountable component shelf.

Visit [crimsonav.com](http://crimsonav.com) to see the full line of vidamounts LCD/plasma, projector and TV/monitor mounts. © 2010 Crimson AV LLC. All rights reserved.

[www.crimsonav.com](http://www.crimsonav.com) | ph: 866.668.6888 | fax: 847.919.3483 | [support@crimsonav.com](mailto:support@crimsonav.com)