



**Professional Solutions - Unrivalled Value**

Ultra-thin universal design holds flat panel screens only 0.39 (10mm) from wall. A perfect match for today's slim TVs. Quick and secure "hook and click" installation with built-in kickstand feature that allows easy access for wiring.

30"-55" / 76.2cm-140cm

100 LB / 45.4 KG

- **Universal Design / Vesa Compatible**  
Works with any hole pattern up to 602x401mm (23.7"x15.8").
- **Slim Design**  
Ultra-thin universal design holds flat panel screen only 0.39" (10mm) from wall.
- **Screen Size**  
Fits most 30" to 55" flat panel screens weighing up to 100lb (45.4kg).
- **Easy Installation**  
Quick and secure "hook and click" installation.
- **Easy Wiring**  
Open wall plate and built-in kickstand allows easy access for wiring.
- **Lateral Adjustment**  
Lateral shift for perfect screen placement.
- **Included Hardware**  
Pre-sorted hardware pack for easy component selection and installation (hardware for installation to wood studs or concrete surfaces included).

**Functional Specifications**

**Depth from wall:** 0.39" (10mm)

**Mounting Surfaces:** Wood studs, concrete & cinder block (with included hardware). Metal Studs (requires accessories).

**Max Mounting Pattern:**  
602mm (23.7") width  
401mm (15.8") height

**Load Capacity:** 100 LB / 45.4 KG

**Warranty:** Limited 10 Years

**Universal Design**  
Fits any hole pattern up to 602x402mm (32"x15.8"). Max VESA hole pattern 600x400mm.

**Securing Clip**  
Attached clip secures brackets in place for no slip installation.

**Lateral Adjustment**  
Lateral adjustment functionality for positioning TV in the right spot on the wall.

**Kickstand and Bracket Release**  
Kickstand holds screen away from wall for easy cord installation then folds back when not in use. Bracket release cord lets you unlock bracket positions easily.

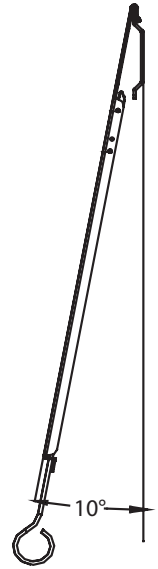
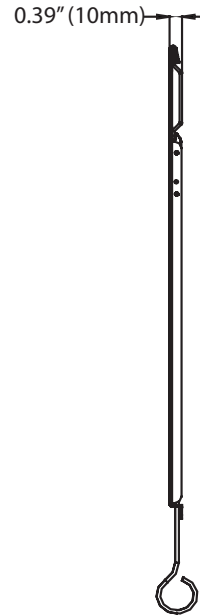
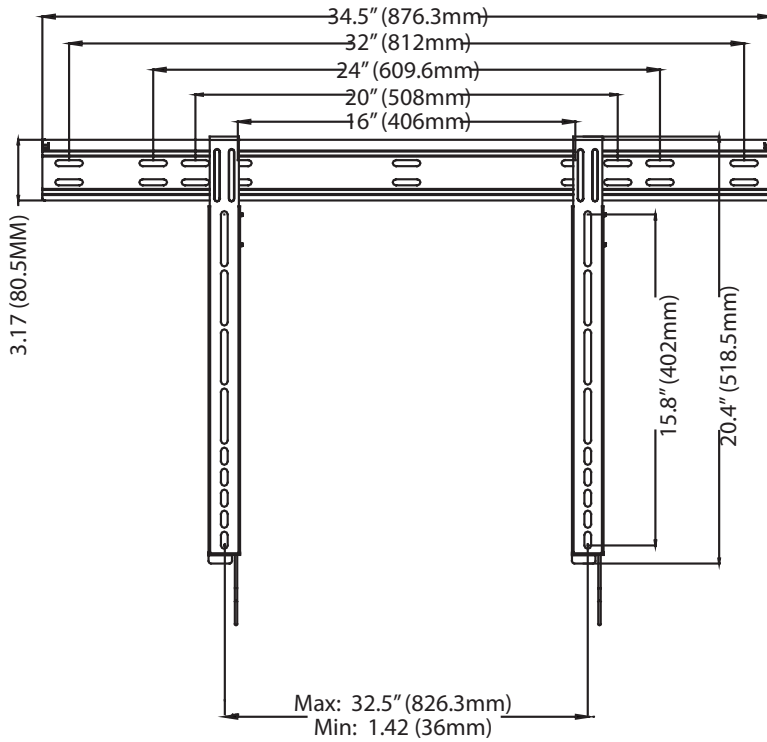
**Mounting Hardware**  
Complete set of screen mounting hardware, labeled for ease of use and ready to go.



# Universal Ultra-Flat Wall Mount

For 30" to 55" (76.2-140cm) LCD, LED and Plasma TV's

FU55 (BLACK)

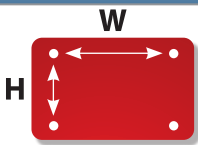


## Product Specifications

## Package Specifications

PRODUCT WEIGHT	LOAD CAPACITY	COLORS	FINISH	PACKAGE SIZE (WxHxD)	SHIP WEIGHT	UPC CODE	PACKAGE CONTENTS
3.3lb (1.5kg)	100lb (45.4kg)	Black	Scratch resistant powder coating	26.8" x 3.3" x 1.5" (681 x 85 x 38mm)	4.4lb (2kg)	FU55 (Black) 0815885010200	Mount, wall and screen mounting hardware, product manual.

## Mounting Interface



	Universal		VESA											
	Min	Max	W	75mm	100mm	200mm	200mm	300mm	300mm	400mm	400mm	400mm	600mm	600mm
W	31mm	602mm	X	X	X	X	X	X	X	X	X	X	X	X
H	31mm	401mm	H	75mm	100mm	100mm	200mm	200mm	300mm	200mm	300mm	400mm	200mm	400mm

## Accessories

### Toggle bolts (for metal stud installation)



- HT2 - 2 Pack
- HT4 - 4 Pack
- HT6 - 6 Pack

Use when installing into metal stud.

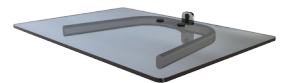
### On-wall Cable Management



- WA1 - 1 Shelf
- WA2 - 2 Shelves
- WA3 - 3 Shelves

Component shelf and on-wall cable routing system. Hides cables inside internal channels for a clean look.

### Shelving



- WF1 - 1 Shelf

Single-stud mountable component shelf.

Visit [crimsonav.com](http://crimsonav.com) to see the full line of vidamounts LCD/plasma, projector and TV/monitor mounts. © 2010 Crimson AV LLC. All rights reserved.