



**Professional Solutions - Unrivalled Value**

Universal Tilting mount for 32" to 55" flat panel screens. Smooth tilt adjustments of 15° forward and 5° back with a locking knob for a variety of viewing angles. Makes a secure installation quick and easy, simply hang the screen and turn the pre-assembled securing screws to lock in place. Open wall plate design provides easy access to wiring.

32"-55" / 81.3cm-140cm

200 LB / 90 KG

**Functional Specifications**

**Depth from wall:** 2.2" (58mm)

**Tilt:** +15°/-5°

**Mounting Surfaces:** Wood studs, concrete & cinder block (with included hardware). Metal Studs (requires accessories).

**Max Mounting Pattern:**

660mm (26") width

501mm (19.8") height

**Load Capacity:** 200 LB / 90 KG

**Warranty:** Limited 10 Years

- **Universal Design / Vesa Compatible**  
*Works with any hole pattern up to 660x501mm (26"x19.8").*
- **Slim Design**  
*Holds flat panel screen only 2.2" (58mm) from wall.*
- **Screen Size**  
*Fits most 32" to 55" flat panel screens weighing up to 200lb (90kg).*
- **Tilt**  
*Pre-tensioned tilt mechanism allows for smooth tilt adjustment of 15° forward and 5° back.*
- **Easy Wiring**  
*Open wall plate and built-in kickstand allows easy access for wiring.*
- **Lateral Adjustment**  
*Lateral shift for perfect screen placement.*
- **Included Hardware**  
*Pre-sorted hardware pack for easy component selection and installation (hardware for installation to wood studs or concrete surfaces included).*

**Universal Design**  
*Fits any hole pattern up to 660x501mm (26"x19.8"). Max VESA hole pattern 600x500mm.*

**Lateral Adjustment**  
*Lateral adjustment functionality for positioning TV in the right spot on the wall.*

**Tilt for perfect viewing**  
*Pre-tensioned tilt mechanism allows for smooth tilt adjustment of 15° forward and 5° back.*

**Pre-Installed Securing Screws**  
*Easy hook and secure installation and pre-assembled securing screw makes installation fast and easy.*

**Mounting Hardware**  
*Complete set of screen mounting hardware, labeled for ease of use and ready to go.*

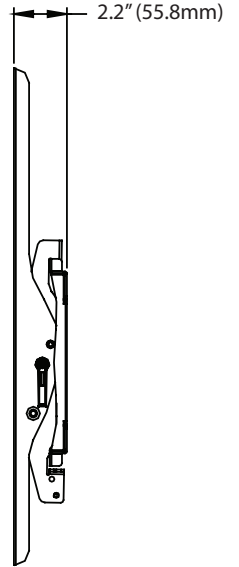
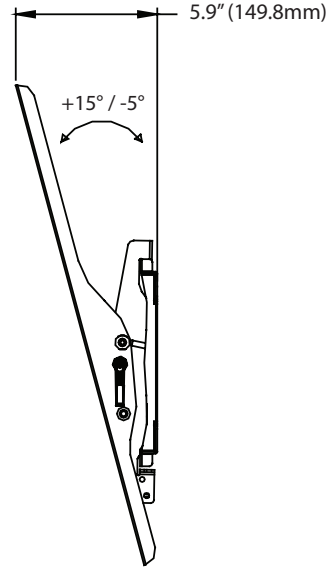
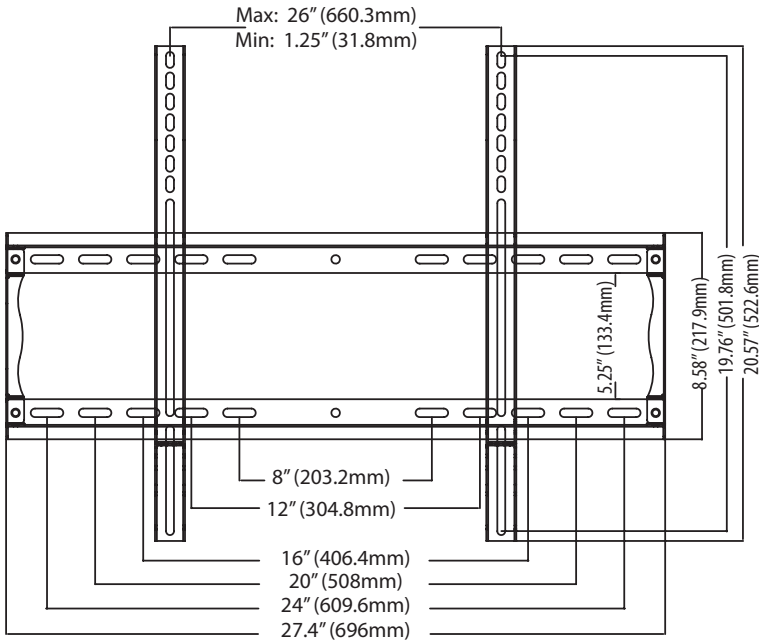


# Flat Panel Tilt Wall Mount

For 32" to 55" (81.3-140cm) LCD, LED and Plasma TV's

T55 (BLACK)  
T55L (BLACK)

T55S (SILVER)

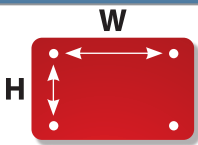


## Product Specifications

## Package Specifications

PRODUCT WEIGHT	LOAD CAPACITY	COLORS	FINISH	PACKAGE SIZE (WxHxD)	SHIP WEIGHT	UPC CODE	PACKAGE CONTENTS
6.8lb (3.1kg)	200lb (90kg)	Black Silver	Scratch resistant powder coating	28.5" x 10.2" x 3.2" (724 x 260 x 82 mm)	9.5lb (4.3kg)	T55 0815885010330 T55S 0815885010347 T55L 0815885010354	Mount, wall and screen mounting hardware, product manual.

## Mounting Interface



	Universal	
	Min	Max
W	31mm	660mm
H	31mm	501mm

	VESA											
W	75mm	100mm	200mm	200mm	300mm	300mm	400mm	400mm	400mm	600mm	600mm	
H	75mm	100mm	100mm	200mm	200mm	300mm	200mm	300mm	400mm	200mm	400mm	
	X	X	X	X	X	X	X	X	X	X	X	X

## Accessories

### Toggle bolts (for metal stud installation)



- HT2 - 2 Pack
- HT4 - 4 Pack
- HT6 - 6 Pack

Use when installing into metal stud.

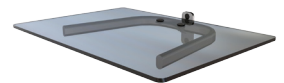
### On-wall Cable Management



- WA1 - 1 Shelf
- WA2 - 2 Shelves
- WA3 - 3 Shelves

Component shelf and on-wall cable routing system. Hides cables inside internal channels for a clean look.

### Shelving



- WF1 - 1 Shelf

Single-stud mountable component shelf.

Visit [crimsonav.com](http://crimsonav.com) to see the full line of vidamounts LCD/plasma, projector and TV/monitor mounts. © 2010 Crimson AV LLC. All rights reserved.