

## GigaMax™ 5e+ Connector

### APPLICATION

Leviton's GigaMax™ 5e+ Connector is designed to be used with all Leviton QuickPort® compatible products. The connectors include Leviton's patented "Retention Force Technology" (RFT) which promotes consistent performance over the life of the system. Includes unique pair separation towers allowing for quicker and easier terminations. The connector is configured in a 180° configuration such that the punch field is in the back, allowing for rear termination.

### FEATURES

- Includes "Retention Force Technology."
- Universal T568A and T568B wiring labels for 110-style IDC terminations.
- Available in 13 different TIA/EIA 606-A compatible colors.
- 180° configuration allowing for rear termination.
- Unique pair separation towers designed to minimize untwisting and to speed installation.

### STANDARDS COMPLIANCE

GigaMax 5e+ System components meet or exceed the Category 5e requirements for channel/component level performance per TIA/EIA-568-B and ISO/IEC 11801. Components certified per cULus and ACA requirements.

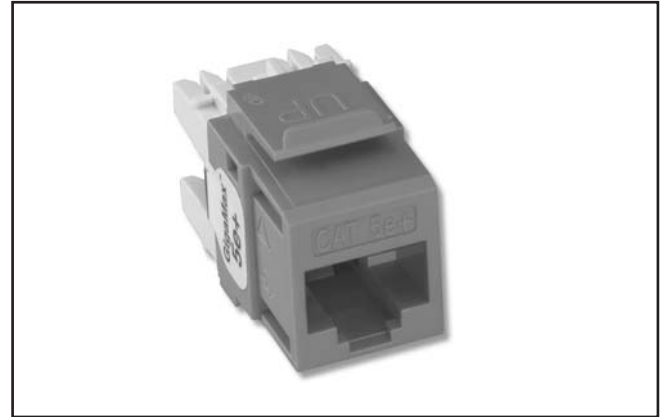
### PHYSICAL SPECIFICATIONS

Dimensions: .885"H x .635"W x 1.211"D  
Materials: Connector body is high-impact, fire-retardant plastic rated UL 94V-0. Spring wire contacts are high quality copper-based alloy, plated with 50 micro-inches of gold over 100 micro-inches of nickel for lowest electrical contact resistance and maximum life.

### DESIGN CONSIDERATIONS

- Use in any QuickPort housing to support GigaMax 5e+ UTP connectivity in surface mount, flush mount, or modular furniture outlets and field configurable panels.
- Can be used in conjunction with other QuickPort snap-in modules for voice/data and video applications over UTP, coax and fiber.
- To identify ports: use different colored modules for each application (13 colors available).

See ELECTRONIC FILES for CAD files (.DXF, .DWG, MS-DOS.EPS) on disk



### WARRANTY INFORMATION

For a copy of Leviton product warranties, log on to [www.levitonvoicedata.com/warranty](http://www.levitonvoicedata.com/warranty).

For ELECTRONIC Typical Specs see (.TXT) file on disk.

### TYPICAL SPECIFICATION

The connector shall meet or exceed the requirements for Category 5e described in TIA/EIA-568-B as well as the Class E requirements described in ISO/IEC 11801. The connector shall be 180° configuration such that the punch field is in the back, allowing for rear termination. Rear termination field shall include pointed pair separation towers to promote easier installation. All plastics used in construction of the connector bodies shall be fire-retardant with a UL flammability rating of 94V-0. Termination of all connectors shall be 110-type insulation displacement connectors (IDC). The connector shall provide a cutting ledge directly adjacent to the 110-style IDCs against which the wires can be directly terminated and cut in one action. Connector wiring shall be universal and accommodate both T568A and T58B wiring schemes.

GigaMax™ 5e+ Connector



For Technical Support Call 1-425-485-4288; in USA call 1-800-824-3005.  
Spec sheets and updates are also available at [www.levitonvoicedata.com](http://www.levitonvoicedata.com).

2222 - 222nd St. SE • Bothell, WA 98021 USA  
Tel: 1-800-722-2082 / 1-425-485-4288 • Fax: 1-425-483-5270 • Int'l Fax: 1-425-485-9170 • GSA Schedule Available



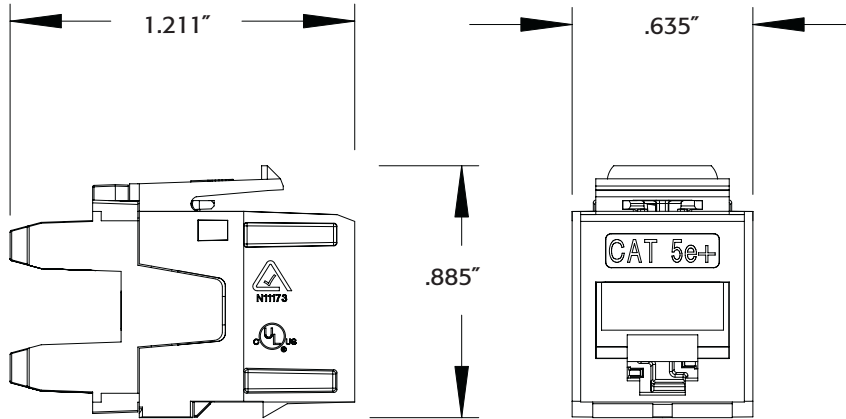
# GigaMax™ 5e+ Connector

**Part Number**  
**5G110-Rx5**

.....

## DIMENSIONAL LINE ART

See ELECTRONIC FILES for CAD images  
(.DXF, .DWG, MS-DOS.EPS)



Side View

Front View

## Part Number

Description	Part No.
GigaMax 5e+ Connector	5G110-R*5

\*= Color choices for connectors: (I) Ivory, (W) White, (G) Grey, (E) Black, (O) Orange, (L) Blue, (C) Crimson Red, (Y) Yellow, (V) Green, (P) Purple, (A) Almond, (B) Brown, (R) Dark Red.



For Technical Support Call 1-425-485-4288; in USA call 1-800-824-3005.  
Spec sheets and updates are also available at [www.levitonvoicedata.com](http://www.levitonvoicedata.com).



2222 - 222nd St. SE • Bothell, WA 98021 USA • Tel: 1-800-722-2082 / 1-425-485-4288 • Fax: 1-425-483-5270 • Int'l Fax: 1-425-485-9170 • GSA Schedule Available