

Entrust LCD Series

550-1500VA Line Interactive AVR Compact Tower UPS

The Minuteman Entrust LCD Series UPS provides users all the features usually available in higher-priced UPS products to protect your valuable equipment: automatic voltage regulation, spike and surge protection, and battery backup, all in a surprisingly compact package.

Entrust LCD units feature eight to ten total outlets to ensure that all devices in your system can be protected with one of four or five surge-only or surge and battery protected outlets. The Entrust LCD's compact footprint makes it an ideal solution for cramped spaces including network and security closets, AV cabinets, tight desks, and more. With sizes ranging from 550VA to 1500VA, the Entrust LCD can support a wide range of equipment, including personal computers, small to midsize security DVRs, network devices, small telephone systems, and more.



[Specs, video, & more at minutemanups.com/entrustlcd](http://minutemanups.com/entrustlcd)

Key Product Line Features



LCD Status Display
Power information in real-time



Tool-less Battery Panel
Easy-access setup & maintenance



SentryHD Software Compatible
Monitor and manage via USB



3-yr Electronics Warranty
2-yr non-prorated battery

Applications



Communications
Workstations, Small Phone Systems



Security
Midsize DVR, Acc Ctrl, Intrusion



IT/Network
Switches, Hubs, Access Points

Capacity:

● Sm ● Med ● Lrg

Trouble-free Setup & Monitoring LCD Display & Easy-access Battery

LCD Control Panel

Monitor your power in real time with Entrust LCD's control panel.

- | | |
|---------------------------|-------------------------|
| 1 Unit Status Indicator | 4 Display Scroll Button |
| 2 Load and Battery Meters | 5 Alarm Silence Button |
| 3 Numeric Display | 6 On/Off/Test Button |



Tool-less Battery Panel

Setup and maintenance are a breeze with Entrust LCD's tool-less battery panel and large easy-grip battery connector. Simply slide the panel down to access the battery for initial connection or battery maintenance.

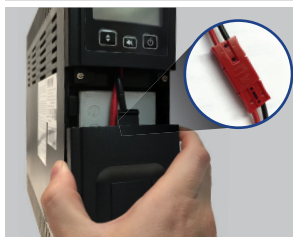


Key Features

- **Efficient Automatic Voltage Regulation (AVR) Hardware**
Regulates output voltage for protection against spikes, surges, brownouts, and blackouts
- **Compact form factor ideal for tight installs**
- **Protect all of your devices**
8-10 power battery backup and surge-only outlets ensure space for all pieces of the system
- **Tool-less Battery Access**
Setup and maintenance made easy with tool-less battery panel
- **Efficient, Responsible Power**
ENERGY STAR and RoHS 2 Compliant
- **Total Control of Your Power**
Free download of Minuteman SentryHD management software connects via USB and provides total monitoring and management capability
- **Independent Battery Bypass**
Provides voltage regulation with surge and spike protection, even when batteries are weak or dead
- **Unmatched Peace of Mind**
3-year limited warranty (electronics), 2-year warranty (batteries), and Minuteman Platinum Protection Plan™

Complete Protection for:

- Desktop Computers
- Standalone Servers
- Network Switches, Hubs, and Peripherals
- VoIP Communications
- Telephone Systems
- External Computer Accessories
- Security Cameras and DVRs



- 1 LCD Status Display
- 2 On/Off/Test, Display Scroll, Alarm Silence
- 3 Tool-less battery access panel
- 4 USB Communication Port
- 5 Surge-only 5-15R outlets (4 - 550 & 700, 5 - 1000 & 1500)
- 6 Battery Backup & Surge 5-15R Outlets (4 - 550 & 700, 5 - 1000 & 1500)
- 7 6-ft. Power Cord
- 8 Input Circuit Breaker



Entrust LCD Series Specifications & Features

ETR550LCD / ETR700LCD / ETR1000LCD / ETR1500LCD

	Model Number	ETR550LCD	ETR700LCD	ETR1000LCD	ETR1500LCD
General	Apparent Output Power	550VA	700VA	1000VA	1500VA
	Active Output Power	330 Watts	420 Watts	600 Watts	900 Watts
	Topology	Line-Interactive			
	Type	Tower			
	Agency Approvals	cTUVus (Conforms to UL1778, CSA 22.2), CE, FCC Class B			
	Green Compliance	U.S. DOE Energy Star, RoHS 2 (EU Directive 2011/65/EU)			
	Warranty	3-years Electronics / 2-years Batteries			
	Equipment Protection Policy	Up to \$75,000 (Continental U.S. and Canada only)			
	Input Power Plug/Cable	NEMA 5-15P W/6 ft cord			
	Receptacles (Battery/Surge) Type	(4/4) NEMA 5-15R		(5/5) NEMA 5-15R	
Input	Voltage Range	90VAC to 140VAC			
	Frequency Range	60Hz ±6Hz			
	Surge Protection	320 joules			
Output	Voltage Default	104VAC to 140VAC			
	Frequency	60Hz ±6Hz			
	Efficiency (AC-AC)	>96% (full load)			
Output (On Battery)	Voltage	120VAC			
	Voltage Regulation	Nominal ±5% until low battery warning			
	Frequency	60Hz ±0.5Hz unless synchronized to line			
	Wave Form	Simulated Sine Wave			
	Overload Capacity	AC Mode: 110% for 1-minute then shutdown, 150% Shutdown Immediately DC Mode: 110% for 20-seconds then shutdown, 150% Shutdown Immediately			
Interface	Protection	Over-Current, Short-Circuit Protected and Latching Shutdown			
	Communications Port	USB (Cable included)			
	LCD Status Indicators	AC Normal, On Battery, AVR Mode, Overload, Weak/Bad/Disconnected Battery, Site Wiring Fault, Internal Fault			
	LCD Meter Display	Input & Output Voltage, Input & Output Frequency, Load Capacity Bar Graph, KVA/KW, Battery Capacity Bar Graph, Est. Runtime			
Battery System	Audible Alarms	On Battery, Low Battery, Internal Fault, Overload, Weak/Bad/Disconnected Battery			
	Full Load Runtime (non-linear)	3 min.	3 min.	3 min.	3 min.
	Half Load Runtime (non-linear)	12 min.	12 min.	12 min.	12 min.
	Hot Swappable Batteries	Yes			
	Battery Module Type	BM0063	BM0064	BM0065	BM0066
	Typical Recharge Time	8 hours to 90% from a full load discharge			
	Battery Type	Sealed, Non-Spillable, Maintenance Free, Value Regulated Lead Acid			
Physical	Net Dimensions: L x W x H	11.3 x 3.4 x 11.0" (288.0 x 87.0 x 280.0 mm)		16.1 x 3.4 x 11.0" (410.0 x 87.0 x 280.0 mm)	
	Net Weight: lbs. (Kgs.)	13.9 (6.3)	15.7 (7.1)	22.0 (10.0)	26.0 (11.8)
	Shipping Dimensions: D x W x H	14.2 x 6.2 x 14.4" (360.0 x 158.0 x 365.0 mm)		19.5 x 6.5 x 14.5" (495.0 x 164.0 x 369.0 mm)	
	Shipping Weight: lbs. (Kgs.)	15.0 (6.8)	16.8 (7.6)	23.4 (10.6)	27.3 (12.4)

Protects Against Spikes, Surges, Brownouts and Blackouts

- Automatic Voltage Regulation (AVR)
- Four surge and battery protected outlets (550/700VA models)
- Four surge-only outlets for protection of non-critical accessories (550/700VA models)
- Five surge and battery protected outlets (1000/1500VA models)
- Five surge-only outlets for protection of non-critical accessories (1000/1500VA models)
- Input circuit breaker protection

Feature-rich Design

- Ultra compact case design
- LCD front panel display
- USB communications
- Hot-swappable batteries
- Easy battery access
- Tool-less battery replacement design
- 3-year limited warranty (electronics), 2-year warranty (batteries)
- RoHS 2 compliant
- Energy Star certified
- Transformer-friendly receptacles
- DC Startup capability
- Independent Battery Bypass
- Built-in self-diagnostics testing
- Site-wiring fault indicator
- Audio & Visual alarms
- Alarm silencer button

LCD Display provides real-time information

- UPS status and condition
- Battery Capacity bar graph
- Estimated Runtime
- AC and DC modes
- Load Capacity bar graph
- Warning / Fault icons

Compatible with Minuteman SentryHD Management Software

- Automatically saves and shuts down unfinished applications
- Gracefully powers down your PC during extended blackouts
- Provides comprehensive monitoring capabilities
- Integrates into SNMP network (when connected to a computer via USB port)



Para Systems, Inc.

1455 LeMay Drive
Carrollton, TX 75007
800.238.7272 • 972.446.7363
www.minutemanups.com • www.sizemyups.com



© Copyright 2015, Para Systems, Inc. Product specifications are subject to change without notice. Minuteman, Platinum Protection Plan, are registered trademarks of Para Systems, Inc. Entrust LCD and SentryHD are trademarks of Para Systems, Inc. All other trademarks are the property of their respective holders. All rights reserved.

Publication No. 34000503 (10-2015)