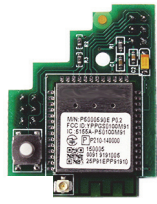




333 Bayview Avenue Amityville, New York 11701
 For Sales and Repairs, (800) 645-9445
 For Technical Service, (800) 645-9440 or visit us at
<http://tech.napcosecurity.com/>
 (Note: Technical Service is for security professionals only)
 Publicly traded on NASDAQ Symbol: NSSC

© NAPCO 2017



WIRELESS CONNECTIVITY SLE-WIFI-MODULE INSTALLATION INSTRUCTIONS

WI2191LF 3/17

The **SLE-WIFI-MODULE** allows your Napco StarLink™ device to connect to the Internet by means of a wireless (Wi-Fi) link, eliminating a wired Ethernet cable connection. For more information about the StarLink SLE Commercial and Residential Dual-Path Alarm Communicators, see WI2189 and WI2190.

Note: The **SLE-WIFI-MODULE** requires 40mA, therefore the existing battery inside the housing may need to be replaced with a larger battery; verify sufficient power is available if the radio is powered by the FACP



Prior to opening the **SLE-WIFI-MODULE** PC board package or touching anything inside the radio enclosure, discharge any static electricity from your body or clothing. Use a grounded wrist strap or touch an unpainted, grounded metal object.

Install as follows:

1. Insert the plastic **Standoff** into the bottom of the **SLE-WIFI-MODULE** (Fig. 1).

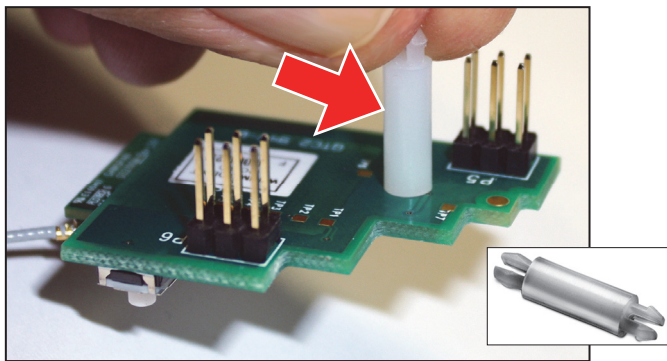


Fig. 1: Standoff (arrow)

2. Insert the very small **Antenna Wire Plug** into its socket on the **SLE-WIFI-MODULE** PC board and press until the plug snaps in place and freely rotates but remains connected (Fig. 2). **Important:** Handle this wire with care; do not twist, create sharp bends or apply excessive force.

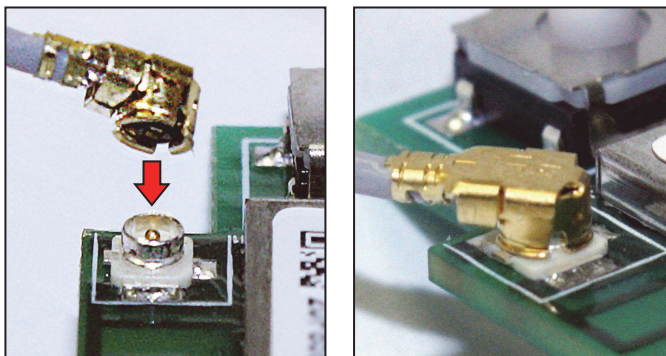


Fig. 2: Antenna Wire Plug

3. **Power off the radio** by disconnecting the positive +VDC +PWR wire from terminal TB1.
4. **Align:** Use Fig. 3 to find the **Header Sockets** near the top of the radio PCB. With radio power off, carefully align the

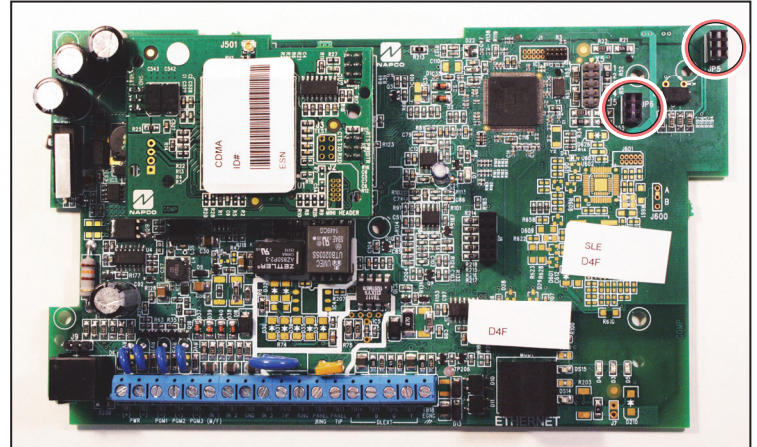


Fig. 3: "Header Sockets" (circled)

Standoff with its hole, and the two **Header Plugs** with their **Header Sockets** (Fig. 4).

Insert: Firmly press the **SLE-WIFI-MODULE** into the radio PC board.

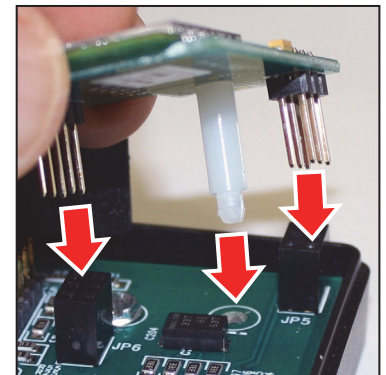


Fig. 4: Align and Insert

ANTENNA MOUNTING

- For radios with a *plastic* housing, follow steps **5A** and **5B**.
- For radios with a *metal* housing, follow steps **5C** and **5D**.

5A. Plastic Housings: Remove the **Break-Away Tab** from the **Antenna Mounting Bracket** with pliers (Fig. 5A).

5B. Plastic Housings: The other end of the **Antenna Wire Plug** is an "Antenna Socket" (Fig. 5B).

Slide this **Antenna Socket** into the space formerly occupied by the **Break-Away Tab**. Position a washer above and a washer below the **Antenna Mounting Bracket** as shown.

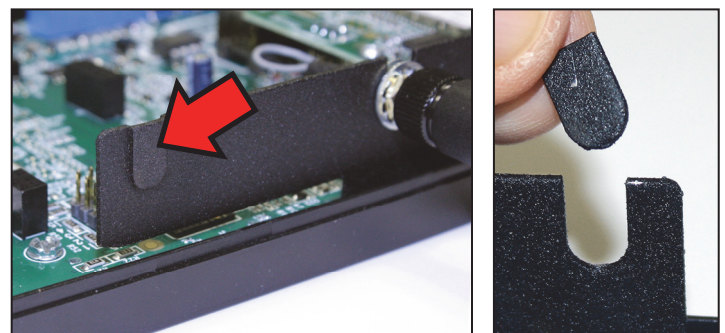


Fig. 5A: Break-Away Tab (arrow)

Tighten with 5/16" wrench (do not over-tighten).

- For radios with a *metal* housing, follow steps **5C** and **5D**.
- For radios with a *plastic* housing, follow steps **5A** and **5B**.

5C. Metal Housings: Remove the knockout located at the top of the metal housing, to the right of the existing antenna (arrow in Fig. 5C).

5D. Metal Housings: The other end of the **Antenna Wire Plug** is an "**Antenna Socket**" (see Fig. 5D).

As shown in Fig. 5D, place washer "**A**" followed by a washer "**B**" on this **Antenna Socket**, then insert the **Antenna Socket** into the knockout hole from inside the enclosure.

With the threads of the **Antenna Socket** extending through the top of the metal housing, place another washer "**B**" followed by the metal washer "**C**" on the **Antenna Socket**. Secure with the nut "**D**" and tighten with a 5/16" wrench (do not over-tighten).

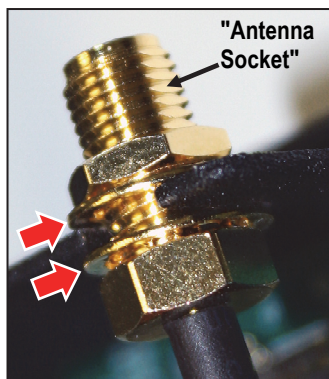


Fig. 5B: A washer on both sides of "Antenna Mounting Bracket" (arrows)

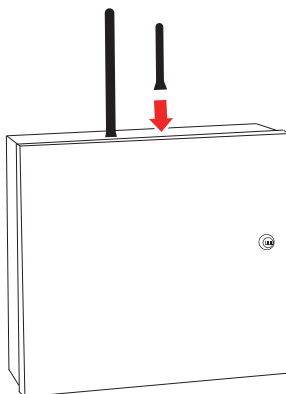


Fig. 5C: Remove Knockout

6. Insert Antenna and tighten by hand until snug.

7. Repower the radio by re-connecting the positive +VDC +PWR wire to terminal **TB1**. Wait 2 minutes for all devices to fully power before proceeding.

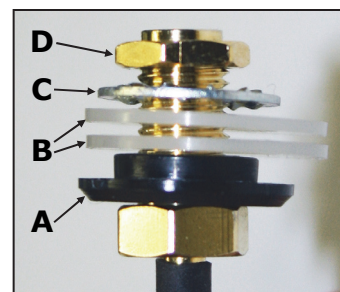


Fig. 5D: 4 washers and 1 nut

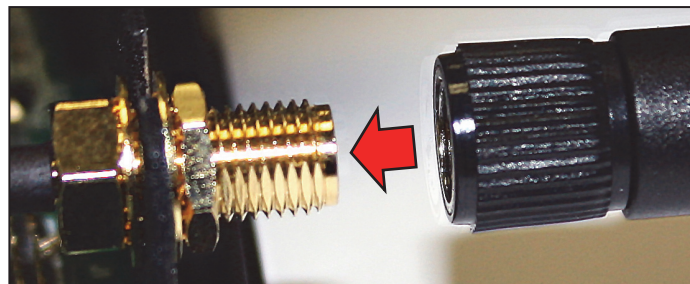


Fig. 6: Insert and tighten Antenna

ELECTRICAL RATINGS

Primary Operating Supply

3VDC from SLE radio main PC board. 45mA maximum current draw.

NAPCO LIMITED WARRANTY

NAPCO SECURITY SYSTEMS, INC. (NAPCO) warrants its products to be free from manufacturing defects in materials and workmanship for *thirty-six months* following the date of manufacture. NAPCO will, within said period, at its option, repair or replace any product failing to operate correctly without charge to the original purchaser or user.

This warranty shall not apply to any equipment, or any part thereof, which has been repaired by others, improperly installed, improperly used, abused, altered, damaged, subjected to acts of God, or on which any serial numbers have been altered, defaced or removed. Seller will not be responsible for any dismantling or reinstallation charges.

THERE ARE NO WARRANTIES, EXPRESS OR IMPLIED, WHICH EXTEND BEYOND THE DESCRIPTION ON THE FACE HEREOF. THERE IS NO EXPRESS OR IMPLIED WARRANTY OF MERCHANTABILITY OR A WARRANTY OF FITNESS FOR A PARTICULAR PURPOSE. ADDITIONALLY, THIS WARRANTY IS IN LIEU OF ALL OTHER OBLIGATIONS OR LIABILITIES ON THE PART OF NAPCO.

Any action for breach of warranty, including but not limited to any implied warranty of merchantability, must be brought within the six months following the end of the warranty period. IN NO CASE SHALL NAPCO BE LIABLE TO ANYONE FOR ANY CONSEQUENTIAL OR INCIDENTAL DAMAGES FOR BREACH OF THIS OR ANY OTHER WARRANTY, EXPRESS OR IMPLIED, EVEN IF THE LOSS OR DAMAGE IS CAUSED BY THE SELLER'S OWN NEGLIGENCE OR FAULT.

In case of defect, contact the security professional who installed and maintains your security system. In order to exercise the warranty, the product must be returned by the security professional, shipping costs prepaid and insured to NAPCO. After repair or replacement, NAPCO assumes the cost of returning products under warranty. NAPCO shall have no obligation under this warranty, or otherwise, if the product has been repaired by others, improperly installed, improperly used, abused, altered, damaged, subjected to accident, nuisance, flood, fire or acts of God, or on which any serial numbers have been altered, defaced or removed. NAPCO will not be responsible for any dismantling, reassembly or reinstallation charges.

This warranty contains the entire warranty. It is the sole warranty and any prior agreements or representations, whether oral or written, are either merged herein or are expressly cancelled. NAPCO neither assumes, nor authorizes any other person

purporting to act on its behalf to modify, to change, or to assume for it, any other warranty or liability concerning its products.

In no event shall NAPCO be liable for an amount in excess of NAPCO's original selling price of the product, for any loss or damage, whether direct, indirect, incidental, consequential, or otherwise arising out of any failure of the product. Seller's warranty, as hereinabove set forth, shall not be enlarged, diminished or affected by and no obligation or liability shall arise or grow out of Seller's rendering of technical advice or service in connection with Buyer's order of the goods furnished hereunder.

NAPCO RECOMMENDS THAT THE ENTIRE SYSTEM BE COMPLETELY TESTED WEEKLY.

Warning: Despite frequent testing, and due to, but not limited to, any or all of the following; criminal tampering, electrical or communications disruption, it is possible for the system to fail to perform as expected. NAPCO does not represent that the product/system may not be compromised or circumvented; or that the product or system will prevent any personal injury or property loss by burglary, robbery, fire or otherwise; nor that the product or system will in all cases provide adequate warning or protection. A properly installed and maintained alarm may only reduce risk of burglary, robbery, fire or otherwise but it is not insurance or a guarantee that these events will not occur. CONSEQUENTLY, SELLER SHALL HAVE NO LIABILITY FOR ANY PERSONAL INJURY, PROPERTY DAMAGE, OR OTHER LOSS BASED ON A CLAIM THE PRODUCT FAILED TO GIVE WARNING. Therefore, the installer should in turn advise the consumer to take any and all precautions for his or her safety including, but not limited to, fleeing the premises and calling police or fire department, in order to mitigate the possibilities of harm and/or damage.

NAPCO is not an insurer of either the property or safety of the user's family or employees, and limits its liability for any loss or damage including incidental or consequential damages to NAPCO's original selling price of the product regardless of the cause of such loss or damage.

Some states do not allow limitations on how long an implied warranty lasts or do not allow the exclusion or limitation of incidental or consequential damages, or differentiate in their treatment of limitations of liability for ordinary or gross negligence, so the above limitations or exclusions may not apply to you. This Warranty gives you specific legal rights and you may also have other rights which vary from state to state.