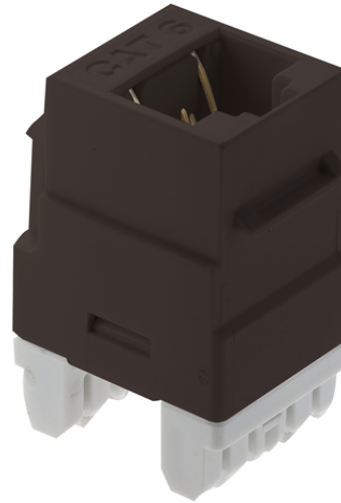


Cat 6 RJ45 Keystone Connector

WP3460-BR



This high quality insert is for use in all Keystone Wall Plates

features & benefits

- Creates an Ethernet port
- Connects to Cat5, Cat5e, or Cat6 cables terminated with RJ-45 plugs Rear retention caps ensure secure wire termination
- Vertical design for easy punchdown termination
- T568A and T568B wiring labels included
- Meets Category 6 described in TIA/EIA-568-B.2
- Insertion and extraction life is 750 Cycles Min
- Jack housing is high-impact, flame resistant plastic, UL 94V-0
- Spring wire is phosphor bronze alloy plated with 50 micro-inch of gold over 100 micro-inches of nickel

specifications

General Info

Color: Brown
Mod Jack Wiring: T568A or T568B
Number Of Ports: 1
Pair Count: 4
Termination: IDC Wire Gauge: 22-24 AWG

Listing Agencies/Third Party Information

cULus: Yes
UL Listing No: ANSI/UL 1863; CAN/CSA-C22.2 No. 182.4-1990

Dimensions

Height U S: 0.87"
Length U S: 1.28"
Width U S: 0.64"
Primary Package Weight U S: 0.0355 lb
Product Weight U S: 0.0255 lb

Technical Information

Flammability Rating: 94 V-0
Humidity: Max 93% non-condensing
Material: High Impact Plastic
Mounting: Keystone
Operating Temperature Fahrenheit: 14°F to 140°F
Storage Temperature: Neg 40°F to 158°F