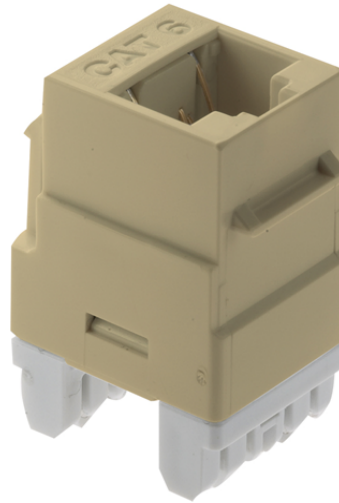


# Cat 6 RJ45 Keystone Connector

WP3460-LA



This high quality insert is for use in all Keystone Wall Plates

## features & benefits

- Creates an Ethernet port
- Connects to Cat5, Cat5e, or Cat6 cables terminated with RJ-45 plugs Rear retention caps ensure secure wire termination
- Vertical design for easy punchdown termination
- T658A and T568B wiring labels included
- Meets Category 6 described in TIA/EIA-568-B.2
- Insertion and extraction life is 750 Cycles Min
- Jack housing is high-impact, flame resistant plastic, UL 94V-0
- Spring wire is phosphor bronze alloy plated with 50 micro-inch of gold over 100 micro-inches of nickel
- Previously P&S Part # KS68ABLA

## specifications

**General Info**

Color: Light Almond  
Mod Jack Wiring: T568A or T568B  
Number Of Ports: 1  
Pair Count: 4  
Termination: IDC Wire Guage: 22-24 AWG

**Listing Agencies/Third Party Information**

cULus: Yes  
UL Listing No: ANSI/UL 1863; CAN/CSA-C22.2 No. 182.4-1990

**Dimensions**

Height U S: 0.87"  
Length U S: 1.28"  
Width U S: 0.64"  
Primary Package Weight U S: 0.0355 lb  
Product Weight U S: 0.0255 lb

**Technical Information**

Flammability Rating: 94 V-0  
Humidity: Max 93% non-condensing  
Material: High Impact Plastic  
Mounting: Keystone  
Operating Temperature Fahrenheit: 14°F to 140°F  
Storage Temperature: Neg 40°F to 158°F