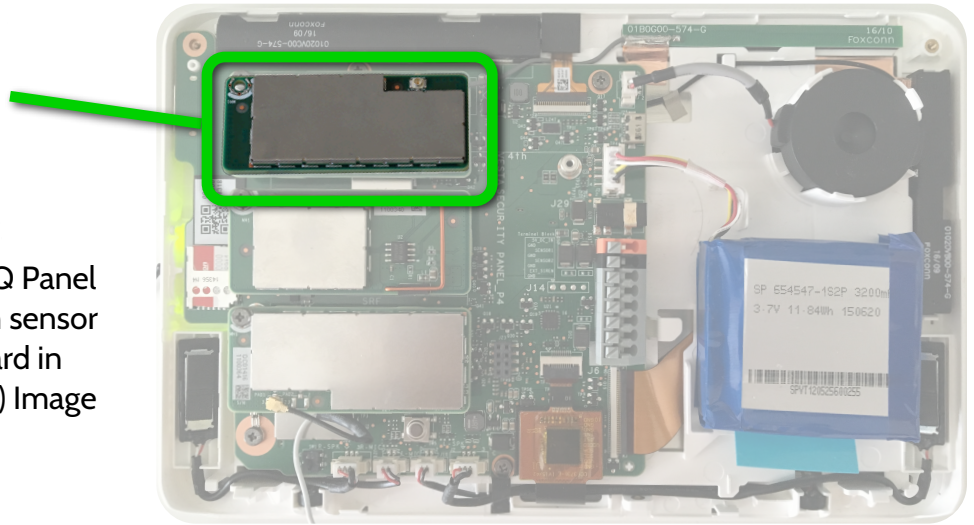


The IQ Card is easily installed in your IQ Panel to support the Image Sensor, a motion sensor with a built in still camera. With this card in place you'll be able to add up to five (5) Image Sensors to your IQ Panel.

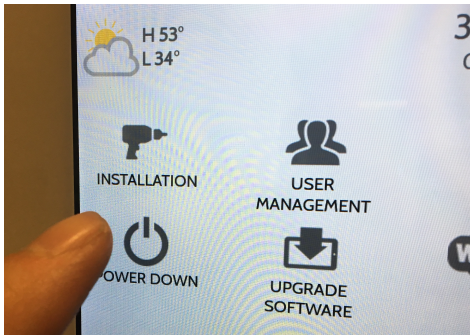
Product Name: IQ Card-IS

Part Number: QC0003

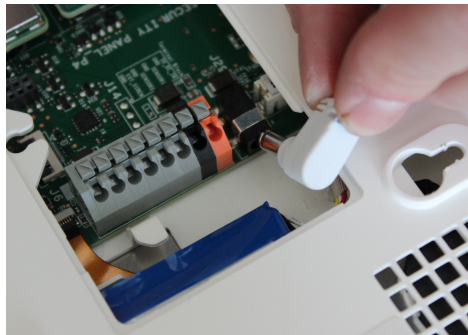
Document last updated on: 3/22/17



## BEFORE YOU BEGIN



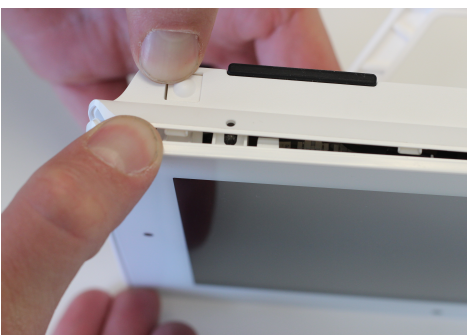
Swipe down to access the settings tray and touch "Settings" followed by "Advanced Settings" Enter your code and touch "Power Down."



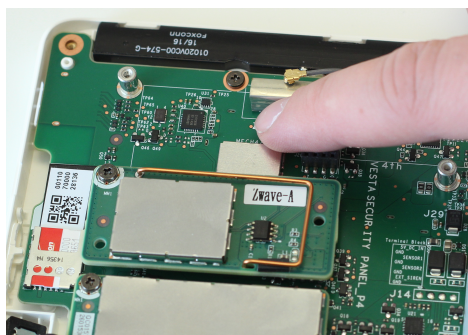
Once the IQ Panel has completely powered down, unplug or disconnect the power by removing the barrel jack connector inside the panel or by unplugging the power supply . *NOTE: it is NOT required to disconnect the battery*



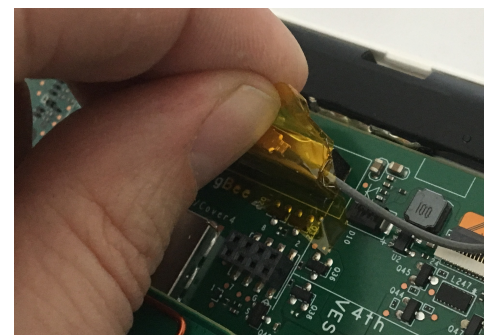
## INSTALLING THE CARD



Push down on the two tabs located on the bottom of the panel and pull the panel away from the back plate

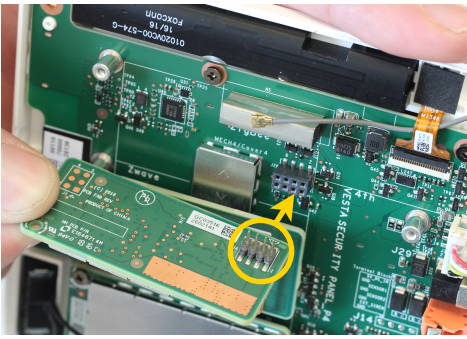


Locate the free space above the Z-Wave radio

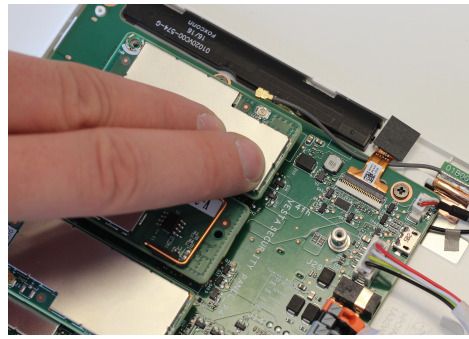


Remove the tape holding the end of the antenna to the board

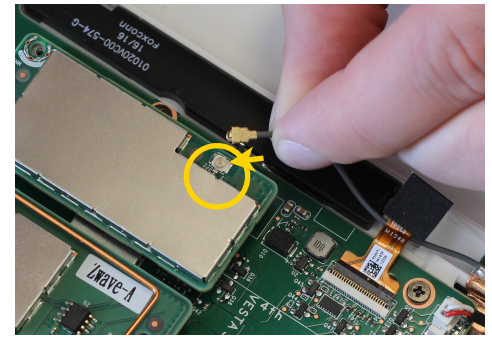




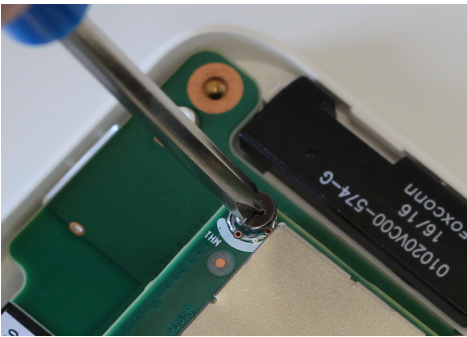
Match the pins on the bottom of the IQ Card-IS to the terminal on the IQ Panel



Push the IQ Card-IS firmly into place



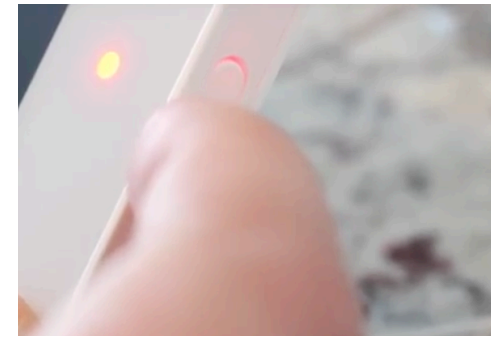
Attach the Image Sensor radio antenna to the IQ Card IS until it seats firmly in place. **NOTE: Improper seating of the antenna may bend the connector.**



Install and tighten the provided locking screw to secure the IQ Card-IS into place.

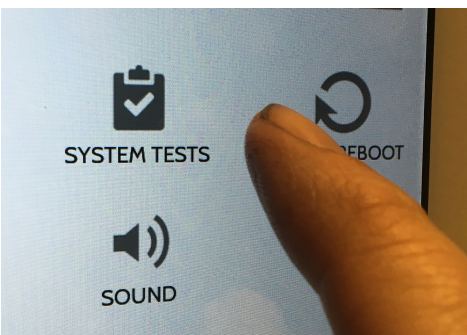


Replace the back cover, taking care not to pinch any antennas or wires.

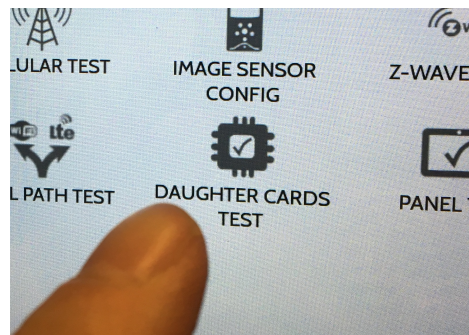


Plug the power supply back in and press and hold the power button for 3 sec to power on

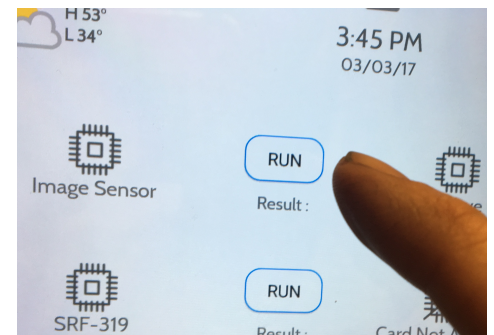
## TESTING THE CARD



Swipe down to access the settings tray and touch “Settings” followed by “Advanced Settings” Enter your code and touch “System Tests”



Touch “Daughter Cards Test”



Run the “Image Sensor” test. Allow up to 2 min for the panel to successfully test the radio in the new IQ Card-IS. If test fails, reboot the panel and try again.

The IQ Panel will automatically recognize the newly-installed IQ Card-IS and it is now ready to use.

FCC ID: 2AAJXQS-IS

IC: 122051A-QSIS

This device complies with part 15 of the FCC Rules. Operation is subject to the following two conditions: (1) This device may not cause harmful interference, and (2) this device must accept any interference received, including interference that may cause undesired operation. Changes or modifications not expressly approved by the party responsible for compliance could void the user's authority to operate the equipment.

This device complies with Industry Canada licence-exempt RSS standard(s). Operation is subject to the following two conditions: (1) this device may not cause interference, and (2) this device must accept any interference, including interference that may cause undesired operation of the device.

Cet appareil est conforme avec Industrie Canada exempts de licence standard RSS (s). Son fonctionnement est soumis aux deux conditions suivantes: (1) cet appareil ne doit pas provoquer d'interférences et (2) cet appareil doit accepter toute interférence, y compris celles pouvant causer un mauvais fonctionnement de l'appareil.