

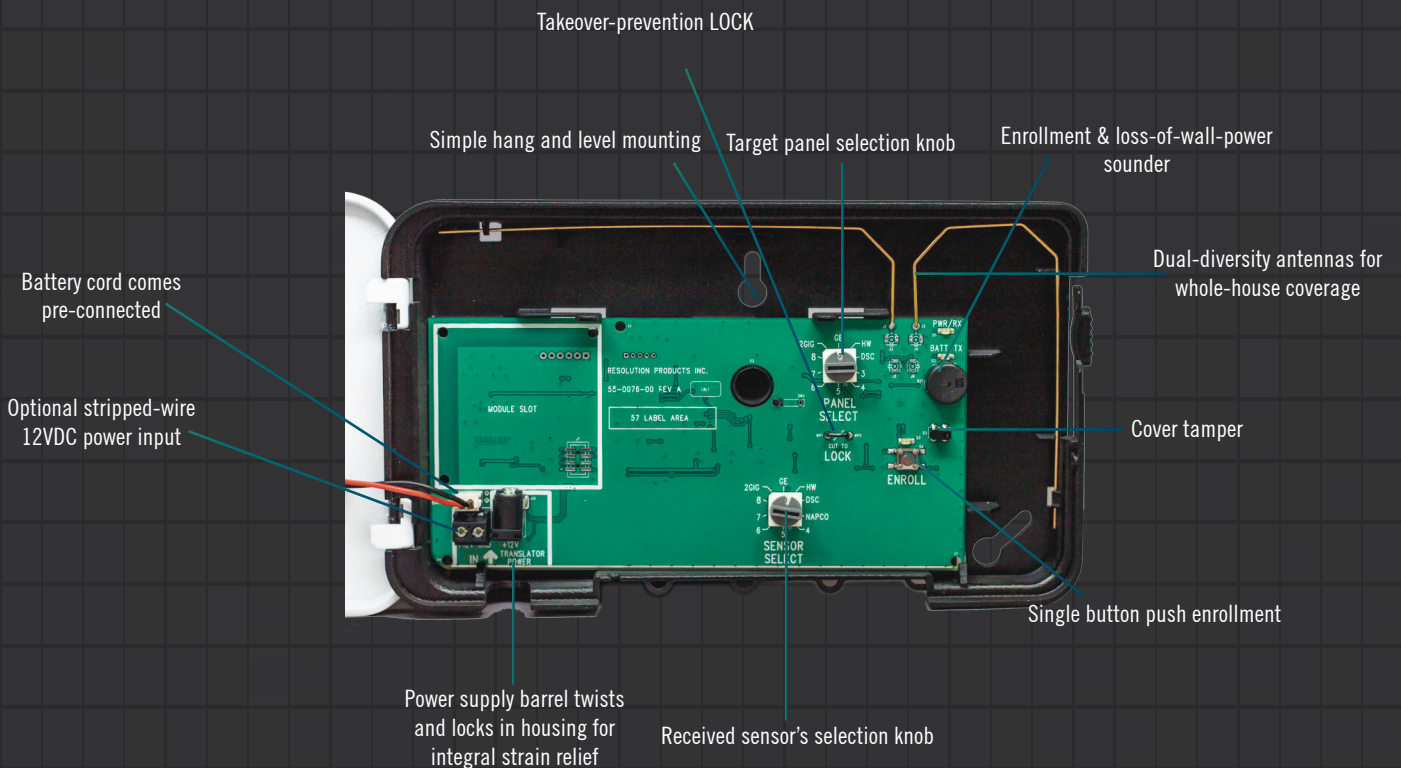
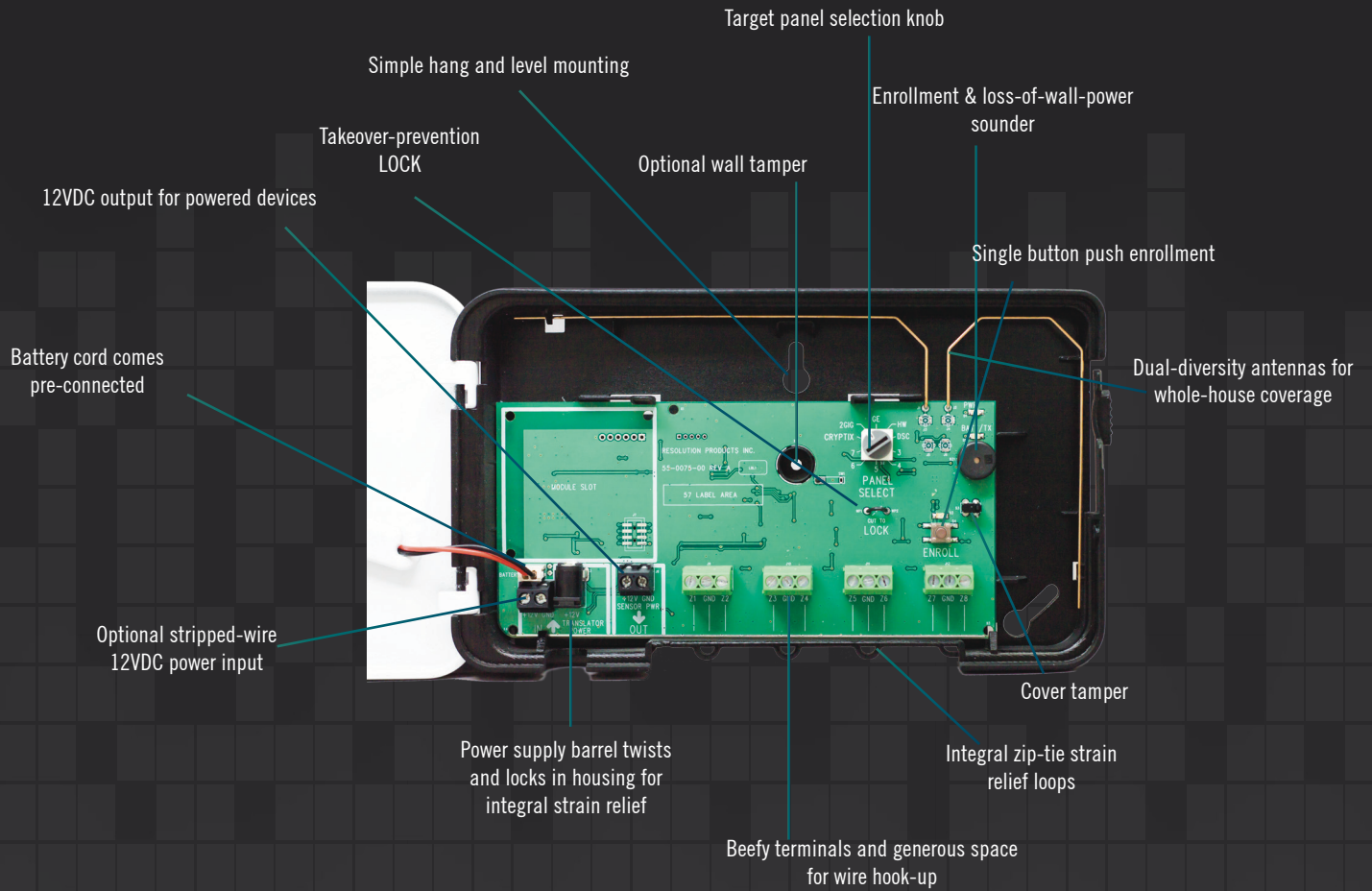
Next Generation of Translators™



We pioneered them. Now we've perfected them.

*Preliminary data sheet 11/2015

Resolution's Universal Translator: RE508X RE524X



Simple, Comprehensive, Robust...

The Universal Translator family delivers on all of your account take-over needs, while minimizing your inventory challenges. With only two part numbers, your technicians will be equipped to get the job done on any install. The wireless model can even be utilized as a repeater, helping minimize service calls due to supervisory issues. Resolution Products invented the Translator product category, and we listened to our customers. The Universal Translator was designed for you.

- Fast and easy installation without any exposed antennas.
- Rechargeable battery.
- Spacious and well-designed wiring areas to ensure quality, error free installations.
- Single button, simplified enrollment reducing learning curves and programming errors.
- Field configurable RF settings handling all widely installed sensors and panels on the market
- Hardened design enabling UL compliance*
- Wireless models can be field configured to act as a repeater extending sensor coverage when needed.

RE508X Hardwire-to-Wireless Flex™ Translator	RE524X Wireless-to-Wireless Flex Translator
INPUT: 8Zones EOL Resistor: Any or none OUTPUT: GE®, Honeywell®, 2GIG™, CryptiX™, and DSC™	64 Zones Translation for Honeywell. Unlimited for others. INPUT: GE, Napco™, Honeywell, 2GIG, and DSC OUTPUT: GE, Honeywell, 2GIG, and DSC Repeater: GE, Honeywell, 2GIG, and DSC
Dual Diversity antennas for whole house coverage.	
UL1023 Compliance*	
No need to use an external power supply or a supply from the existing panel. Backup battery comes connected and activates on first power-up. Simple barrel power connector. Loss of wall power warning chirp. Wall power supply included	
24 hour backup all contact zones Powered devices: 200mA max, 4 hours battery backup @ 80mA	24 hour backup all zones Powered devices: 200mA max, 4 hours battery backup @ 80mA
Cover Tamper capable	
Automatic detection of sensor type to reduce programming complexity	
Programming LOCK: Prevents competing dealers from taking over the Translator	

*UL standard compliance certified by ETL: pending