

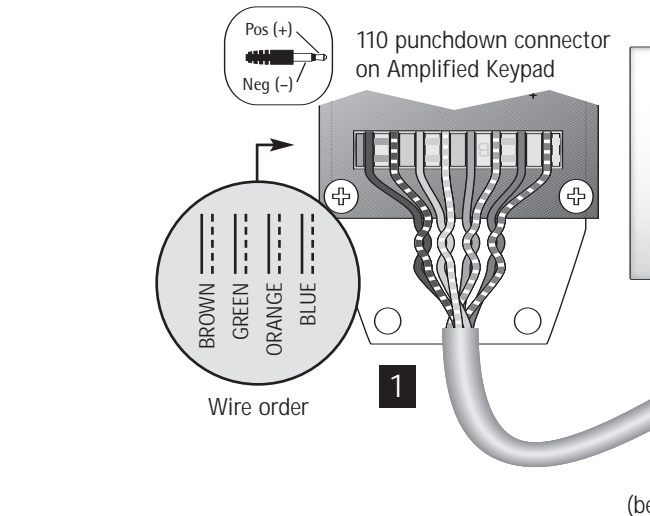
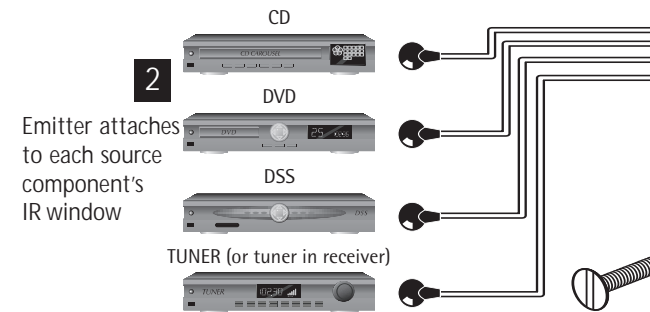
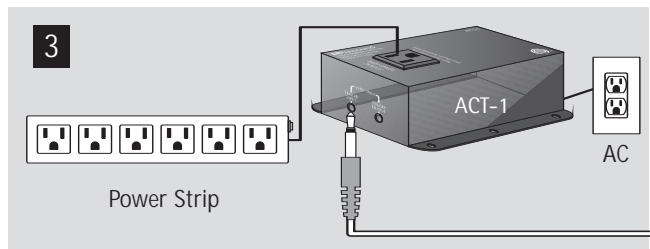
Safety Instructions:

1. Read Instructions - All the safety and operating instructions should be read before the appliance is operated.
2. Retain Instructions - The safety and operating instructions should be retained for future reference.
3. Heed Warnings - All warnings on the appliance in the operating instructions should be adhered to.
4. Follow Instructions - All operating and user instructions should be followed.
5. Water and Moisture - The appliance should not be used near water; for example, near a bathtub, washbowl, kitchen sink, laundry tub, in a wet basement, or near a swimming pool.
6. Wall or Ceiling Mounting - The appliance should be mounted to a wall or ceiling only as recommended by the manufacturer.
7. Ventilation - The appliance should be situated so that its location or position does not interfere with its proper ventilation. For example, the appliance should not be situated on a bed, sofa, rug, or similar surface that may block the ventilation openings, or placed in a built-in installation, such as a bookcase or cabinet that may impede the flow of air through the ventilation openings.
8. Heat - The appliance should be situated away from heat sources such as radiators, heat registers, stoves, or other appliances (including amplifiers) that produce heat.
9. Power Sources - The appliance should be connected to a power supply only of the type described in the operating instructions or as marked on the appliance.
10. Grounding or Polarization - Precaution should be taken so that the grounding or polarization means of an appliance is not defeated.
11. Power Cord Protection - Power supply cords should be routed so that they are not likely to be walked on or pinched by items placed upon or against them, paying particular attention to cords at plugs, receptacles, and the point where they exit from the appliance.
12. Object and Liquid Entry - Care should be taken so that objects do not fall and liquids are not spilled into the enclosure through the openings.
13. Damage Requiring Service - The appliance should be serviced by qualified service personnel when:
 - A. The power supply cord or the plug has been damaged; or
 - B. Objects have fallen, liquid has been spilled into the appliance; or
 - C. The appliance has been exposed to rain; or
 - D. The appliance does not appear to operate normally; or
 - E. The appliance has been dropped or the enclosure is damaged.
14. Servicing - The user should not attempt to service the appliance beyond that described in the operating instructions. All other servicing should be referred to qualified service personnel.

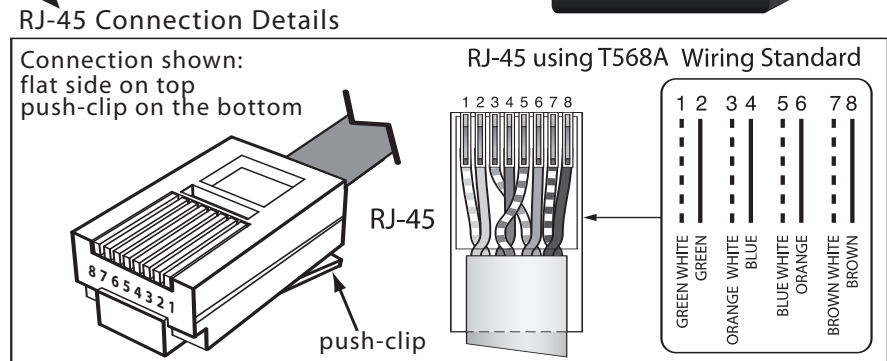
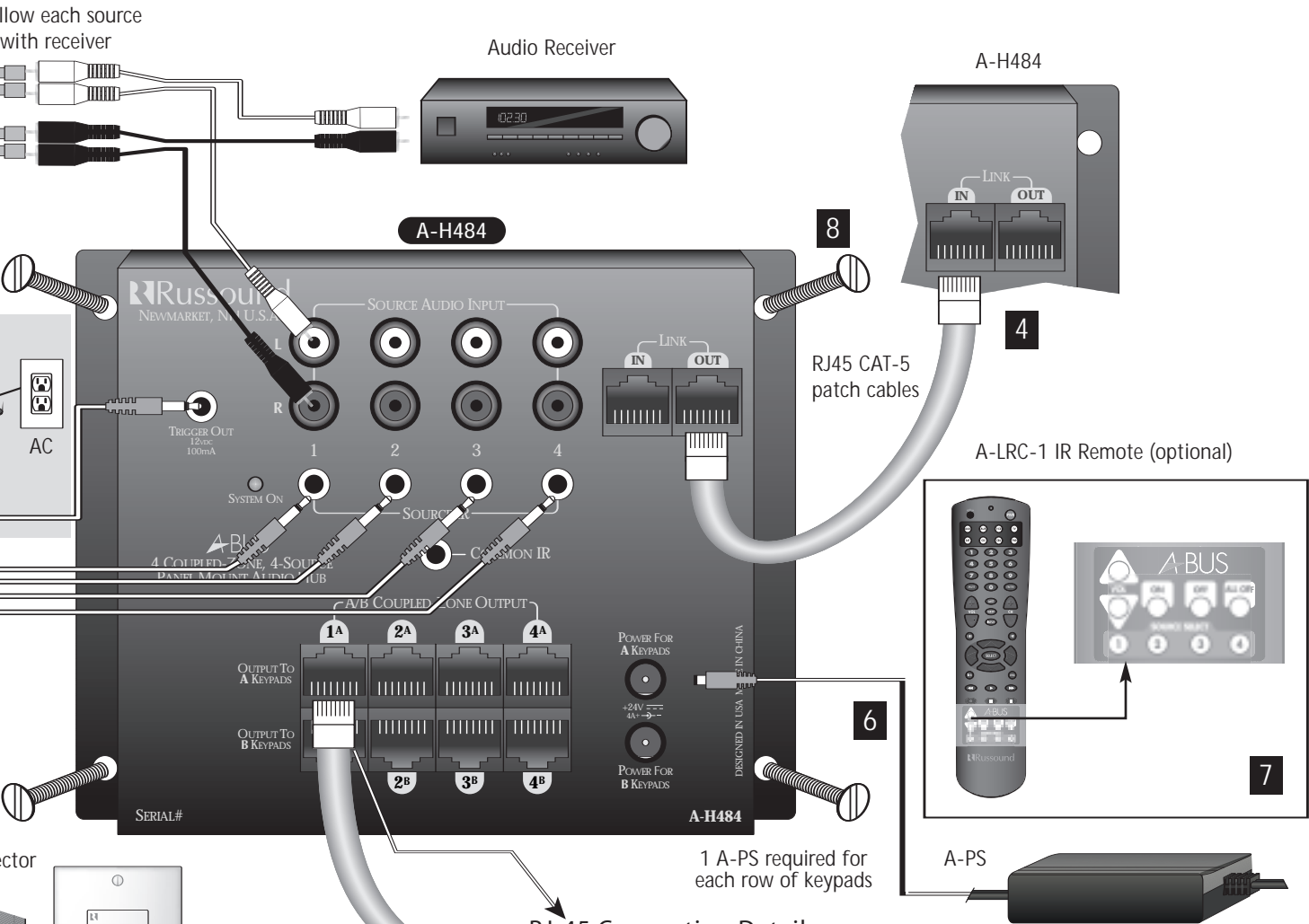
Precautions:

1. Power - WARNING: BEFORE TURNING ON THE POWER FOR THE FIRST TIME, READ THE FOLLOWING SECTION CAREFULLY. All models are designed for use with either AC120V, 60Hz or AC240, 50Hz voltages. The unit will autoswitch to either of these voltages.
2. Do Not Touch The A-H1 With Wet Hands - Do not handle the AH-1 or power cord when your hands are wet or damp. If water or any other liquid enters the A-H1 cabinet, take the A-H1 to a qualified service person for inspection.
3. Care - From time to time you should wipe off the front and side panels of the cabinet with a soft cloth. Do not use rough material, thinners, alcohol or other chemical solvents or cloths since this may damage the finish or remove the panel lettering.

Source Components



CONNECTION DIAGRAMS FOR RUSSOUND® MODEL A-H484. REFER TO THE INSTRUCTIONS ON BACK. DIAGRAMS ARE NOT TO SCALE.



When wiring directly to Amplified Module, use T568A RJ45 wire configuration

1 AMPLIFIED KEYPADS

Coupled Zone Outputs. Each of the 4 zone outputs can support 2 Amplified Keypads connected via CAT-5 cable. For example, in Zone 1 you might use an A-KP2 amplified keypad (connector 1A) in the main room and one in a secondary area in the same zone (connector 1B). Source selection is shared by coupled zone outputs. A CAT-5 cable is used to connect each A-KP2 amplified keypad to a keypad output on the A-H484 Hub. For clean installations, use RJ45 CAT-5 patch cables to connect from the Hub to an RJ45 Wall Plate (optional), and then wire from the Wall Plate to the Amplified Keypad (see diagram). The Amplified Keypads have 110 punchdown connectors for the 8 individual conductors of the CAT-5 cable (use a punchdown tool with a 110 blade to insert conductors).

NOTE: When wiring directly to an Amplified Keypad (i.e., not using an RJ45 Wall Plate) use T568A RJ45 wire configuration.

2 IR EMITTERS

Routed IR Outputs and Common IR Output. When a source is selected from a zone, the IR signal received through the zone's Keypad is routed exclusively to that source via the A-H484's Routed IR outputs. This allows the use of multiple sources of the same brand (for example, two identical DSS units). The Common IR output sends out all IR signals and can be used with an IR flasher that blankets all source components. (Model 845.1 emitters shown are not included.)

3 TRIGGER OUTPUT

12-Volt Trigger Output. The trigger output can be used to control a switched AC outlet, such as the Russound ACT-1, to turn power on and off to source equipment. The trigger voltage is sent when any zone in the system is turned on. When the ALL OFF command is used, the trigger is turned off. Use a 1/8" male 2-conductor jack (i.e., mini phono jack), not included.

4 LINK IN & LINK OUT

The Link In and Out is used to connect multiple A-H484 Hubs together, which allows for use of additional Amplified Keypads. The Link connects the Routed IR, Common IR, and status, but you must split the outputs of your source equipment to share the audio signals among multiple A-H484s. Use an RJ45 CAT-5 patch cable.

NOTE: The A-H484 is not recommended for use with the Russound CAV6.6 controller/amplifier.

5 SOURCES

Connect up to 4 audio sources, such as a CD/DVD player or DSS receiver. If the sources are connected to an existing home theater system, you can share them with the A-H484 by splitting their audio outputs with "Y" connectors (see diagram).

6 POWER SUPPLY

The A-H484 Hub and Amplified Keypads are powered by the A-PS 24 VDC power supply. Connect 1 Russound A-PS power supply to the A-H484 for each row (A and B) of 4 Amplified Keypads. The A-PS should be plugged into an unswitched AC outlet (one that is live all the time). When the A-PS is providing power, the A-H484's SYSTEM ON LED will illuminate, once an Amplified Keypad is turned on.

7 OPERATION

Using the optional A-LRC-1 IR remote control aimed at an A-KP2 keypad, press the ON button to turn on the keypad and the A-H484. Select the source that you would like to listen to using the 1 through 4 SOURCE SELECT buttons. Use the VOL rocker to adjust the volume, the OFF button to turn off the zone, and the ALL OFF button to turn off all zones as well as the A-H484. The A-H484 is designed to be used with A-KP2 Multi-Source capable Amplified Keypads. The A-KP2 power button will select sources when pressed after initial power on. "Press and Hold" turns the A-KP2 off and a subsequent "Press and Hold" turns the System off. If single source Amplified Keypads are used, such as the A-KP, the A-LRC1 remote control will be required to operate the A-H484 Hub.

8 MOUNTING

Mount the A-H484 near the source equipment using screws or hook and loop fastener. The A-H484 will also fit many structured wiring distribution panels.

A-BUS® is a registered trademark of LeisureTech Electronics Pty Ltd Australia
Decora® is a trademark of Leviton Corporation

A-BUS® Model A-H484 Multi-Source, Multi-Zone Hub for A-BUS® System Instruction Manual

A-BUS® SYSTEM OVERVIEW

The product you have just purchased is an integral part of the Russound A-BUS Multi-Room Audio System. It is a component which, when combined with other essential components and your source equipment (receiver, CD player, etc.), creates a versatile whole-house audio system that will fill your rooms with high-quality sound for years to come.

A-BUS technology is a new, innovative method of providing high quality audio to remote locations with a single 8-conductor cable such as CAT-5. A-BUS technology provides many advantages over other methods of audio distribution, including: simple, single CAT-5 wiring scheme; infrared control of system components; infrared control of the optional A-KP2 amplified keypad module; and system power status.

Every A-BUS System is comprised of components from each of the following three areas.

1. A-BUS Amplified Control Modules: The Module contains both the amplifier for the room's speakers as well as the control for those speakers. One Module should be used for each room you choose to control. The Russound A-KP2 Amplified Keypad (with built-in IR receiver) and A-VC Amplified Volume Control are examples of A-BUS Amplified Control Modules.
2. A-BUS Hubs: All components of the A-BUS system must be wired centrally to a Hub located near your source equipment. The Hub provides the connection for source equipment, volume controls, infrared emitters and power supply. The A-H484, A-H4, A-H4D, and A-H2 are examples of A-BUS Hubs. The A-H484, A-H4, and A-H2 are surface-mount units. The A-H4D is an in-wall Decora® style unit.
3. Power Supply: The power supply plugs into the Hub. The Russound A-PS 24VDC/2.5A unit is an example.

Rev. 1 04/19/04

Russound
A/V DISTRIBUTION & CONTROL SYSTEMS
5 Forbes Rd. Newmarket, NH 03857, USA
Tel 603.659.5170 • Fax 603.659.5388
e-mail: tech@russound.com

A-H484 OVERVIEW

The A-H484 is an A-BUS 4-zone, 8-room, 4-source Audio Distribution Hub. Used with IR-repeating Amplified Keypads (e.g., A-KP2) and the A-LRC-1 remote, the A-H484 allows each of 4 zones to independently select any of 4 sources. Each of the 4 zones can support 2 Keypads, making it possible to create an 8-room system.

IMPORTANT – Before installation, review the manuals included with each component in your system. If you are unsure of any of the installation procedures described herein or elsewhere, consult a professional electronics installer.

A-H484 KEY FEATURES

- 1) Four line-level audio inputs
- 2) 4 Routed IR outputs (1 for each source); 1 Common IR output
- 3) 12-volt trigger output
- 4) Link In and Out
- 5) 4-zone coupled outputs (for 2 keypads per zone)
- 6) Dual power supply inputs (use 1 A-PS per 4 Amplified Keypads)
- 7) IR remote controlled
- 8) Compact size for mounting near audio equipment

A-H484 SPECIFICATIONS

Power Supply:	A-PS. 24VDC/2.5A. One for each bank A and B.
Trigger Output:	12VDC/100mA. 1/8" Male. Tip (+), sleeve (-)
Keypad Connection:	RJ-45 T568A Standard
Link Connection:	RJ-45 T568A Standard
Emitter Connections:	1/8" Male. Tip (+), sleeve (-)
Dimensions:	6.5"W x 5"H x 1.5"D (165x127x38mm)
Weight:	1lb. 12oz. (795g)

LIMITED WARRANTY

The Russound A-H484 is fully guaranteed for Two (2) years from the date of purchase against all defects in materials and workmanship. During this period Russound will replace any defective parts and correct any defect in workmanship without charge for either parts or labor. For this warranty to apply, the unit must be installed and used according to its written instructions. If service is necessary, it must be performed by Russound. The unit must be returned to Russound at the owner's expense and with prior written permission. Accidental damage and shipping damage are not considered defects under the terms of the warranty. Russound assumes no responsibility for defects resulting from abuse or servicing performed by an agency or person not specifically authorized in writing by Russound. Damage to or destruction of components due to improper use voids the warranty. In these cases the repair will be made at the owner's expense. To return for repairs, the unit must be shipped to Russound at the owner's expense, along with a note explaining the nature of the service required. Be sure to pack in a corrugated container with at least 3 inches of resilient material to protect the unit from damage in transit. Russound sells products only through authorized Dealers and Distributors to ensure that customers obtain proper support and service. Any Russound product purchased from an unauthorized dealer or other source, including retailers, mail order sellers and online sellers will not be honored or serviced under existing Russound warranty policy. Any sale of products by an unauthorized source or other manner not authorized by Russound shall void the warranty on the applicable product.