



**SILENT
KNIGHT**

by Honeywell

Model 5815XL Signaling Line Circuit Expander

Add flexibility to IntelliKnight® applications
with the 5815XL SLC Expander

The Model 5815XL SLC Expander is a signaling line circuit controller for Silent Knight's IntelliKnight 5820XL FACP or 5820XL-EVS FACP with Emergency Voice System. It allows you to add 99 SK modules and 99 SK devices or 127 SD addressable devices to the IntelliKnight system. Add up to three 5815XLs to a system to achieve the maximum number of devices on the system.

5815XL signaling circuits have the same functionality as the SLC that is built into the IntelliKnight panel and support the same addressable devices as the main panel. The 5815XL connects to the panel via the RS 485 bus.

Model 5815XL Signaling Line Circuit Expander

The 5815XL expands the capabilities of the IntelliKnight fire control panel by allowing an additional 99 SK modules and 99 SK detectors or 127 SD addressable devices to be attached to the system.

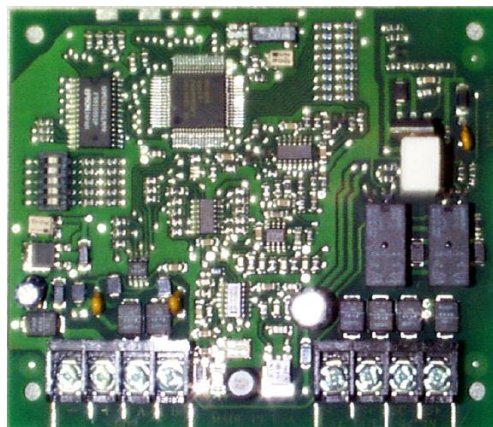
All functionality of the built-in SLC is provided with the 5815XL. Three 5815XLs can be added to an 5820XL or 5820XL-EVS IntelliKnight system for a total of 396 SK detectors and 396 SK modules or 508 SD addressable devices per system.

Operation

The 5815XL communicates with the IntelliKnight FACP via an RS 485 system bus. A green LED on the 5815XL board blinks to indicate good communication. If an addressable device on a 5815XL fails, the loop communicates the failure to the panel and continues to operate normally.

Features

- Adds 99 SK modules and 99 SK detectors or 127 SD addressable devices to an 5820XL/EVS IntelliKnight system
- Three 5815XLs per system
- 5815XL SLCs have same functionality as the 5820XL/EVS, including Style 6 (Class A) configuration
- Communicates with the IntelliKnight panel via RS 485 system bus
- LED indicates good communication
- UL 864 listed, complies with NFPA 72 and 101
- Communicates on most standard wiring systems (ideal for retrofits)
- FM approved; CSFM approved; MEA



5815XL

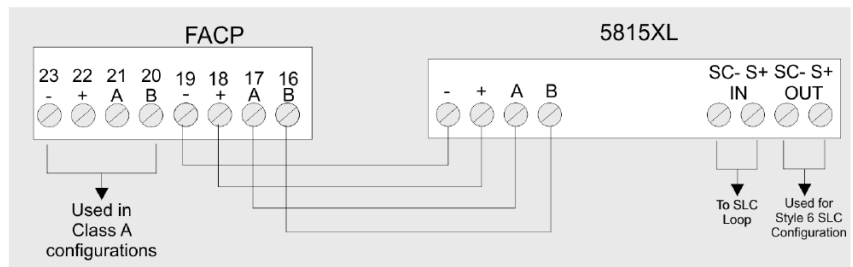
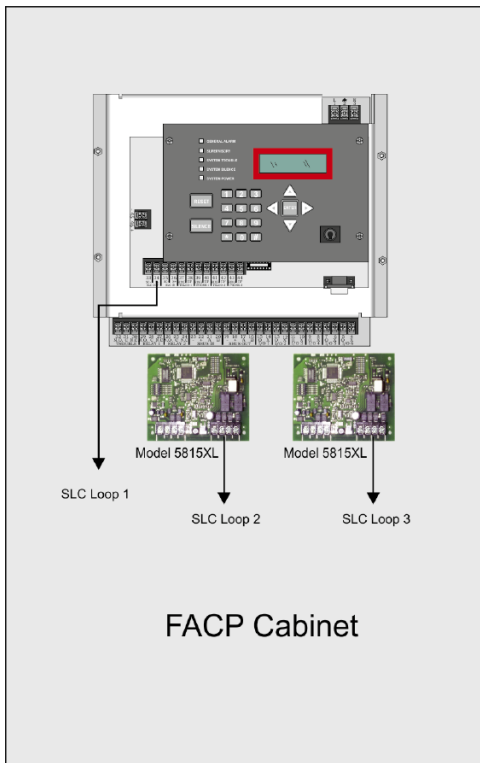
Specifications

System Capacity	5820XL FACP supports three 5815XL SLC Expanders. Each expander supports 99 SK detectors and 99 SK modules or 127 SD addressable devices.
Operating Voltage	24 VDC
Current Draw	55 mA minimum - 125mA max.
Ambient Temp.	32°F to 120°F (0°C to 49°C)
Mounting	Inside 5820XL, 5895XL cabinet, or 5815RMK cabinet

Model 5815XL SLC Expander

Engineering Specifications

The contractor shall provide a signaling circuit expander compatible with the IntelliKnight 5820XL fire control panel that allows 99 SK Modules and 99 SK Detectors or 127 SD addressable devices to be added to the system. The IntelliKnight panel shall support three expanders per system. The expanders shall provide signaling line circuits that have the same installation and functionality as built-in SLCs and shall communicate to the main panel via an RS 485 system bus. A green LED on the expander board shall blink to indicate communication with the main panel.



5815XL Block Diagram



This document is not intended to be used for installation purposes. We try to keep our product information up-to-date and accurate. We cannot cover all specific applications or anticipate all requirements. All specifications are subject to change without notice. For more information, contact Silent Knight 12 Clintonville Road, Northford, CT 06472-1610 Phone: (800) 328-0103, Fax: (203)484-7118. For Technical Support, Please call 800-446-6444. www.silentknight.com

MADE IN AMERICA

FORM# 350098 Rev G
© 2013 Honeywell International Inc.