



SK-Zone

Intelligent Interface Module

The SK-Zone interface module allows intelligent panels to interface and monitor 2-wire conventional smoke detectors. This means you can retrofit an existing building and use existing conventional devices.

For more information about the IntelliKnight system, or to locate your nearest source, please call 1-800-328-0103.

Description

The SK-Zone is an intelligent two-wire interface module for use with Silent Knight IntelliKnight series fire alarm control panels (FACPs). The SK-Zone allows a Silent Knight FACP to interface and monitor two-wire conventional smoke detectors.

The SK-Zone is addressed through the signaling line circuit loop of the FACP. It transmits the status of one full zone of two-wire detectors to the FACP. Status conditions are reported as normal, open, or alarm. The SK-Zone supervises the zone of detectors and the connection of the external power supply.

All two-wire detectors being monitored must be UL compatible with the SK-Zone.

Features

- Converts a conventional two-wire loop to an SLC loop
- Fully supervised
- Support for Style B and Style D wiring
- Panel controlled status LED that flashes green in normal state and is solid red in alarm
- Attractive ivory cover plate
- Rotary address switches for fast installation
- SEMS screws for easy wiring
- UL Listed

Installation

SK-Zone mounts directly into a 4" square electrical box. The box must have a minimum depth of 2-1/8". A surface mount electrical box (System Sensor PN SMB500) is available from Silent Knight.

Compatibility

The SK-Zone is compatible with the following IntelliKnight FACP's:

5700
5808
5820XL
5820XL-EVS



SK-Zone

Specifications

Physical

Height: 4.5" (11.5 cm)
Width: 4.0" (10.2 cm)
Depth: 1.3" (3.2 cm)
Shipping Weight: 6.3 oz (196 g)

Environmental

Operating Temperature: 32°F – 120°F
(0°C – 49°C)
Humidity: 10% – 93% non-condensing

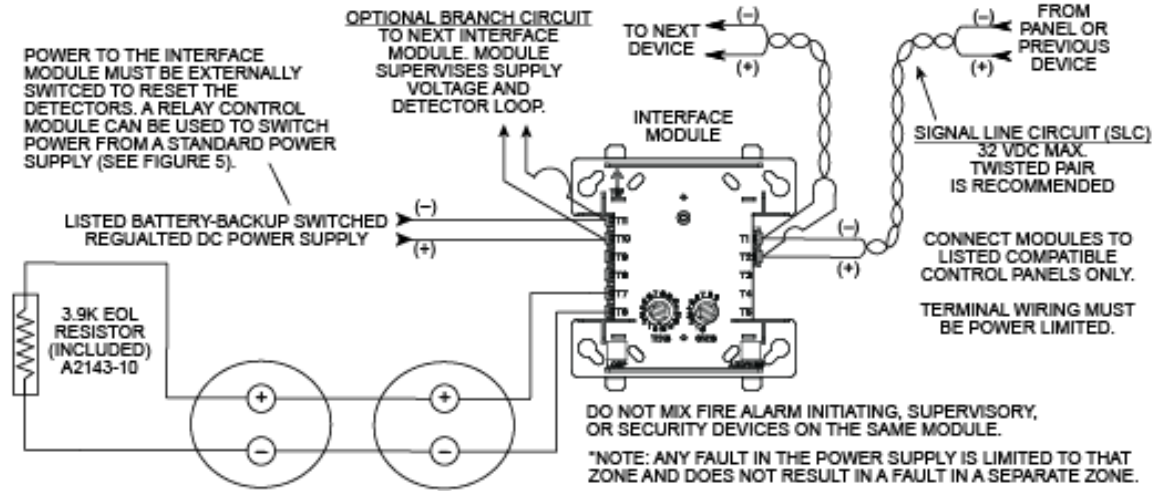
Electrical

Operating Voltage: 15 – 32 VDC
Current Draw: 5.1 mA max (LED on)
Operating Current: 270 μ A (LED flashing)
Standby Current: 300 μ A max. @ 24 VDC with communication
End-of-Line Resistance: 3.9k Ω
Initiating Device Circuit Wiring Resistance: 25 Ω max

Model SK-Zone Intelligent Interface Module

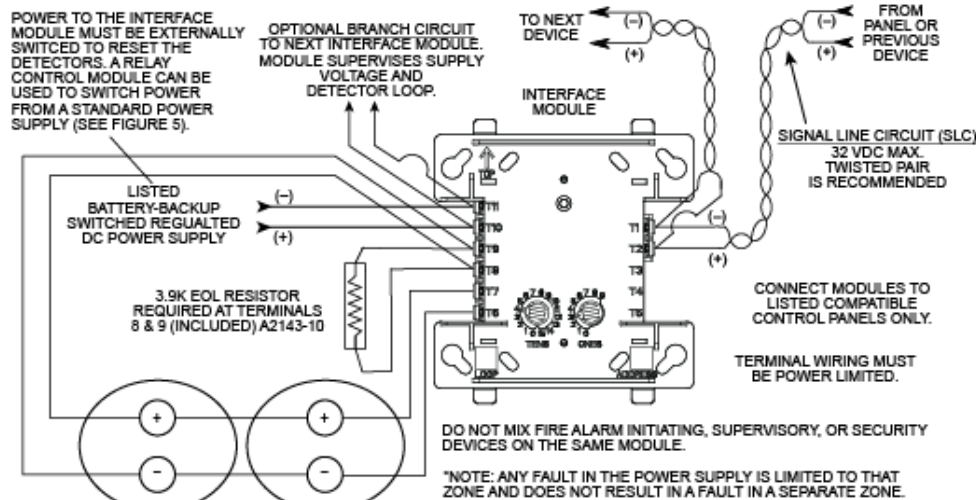
Engineering Specifications

The contractor shall furnish and install where indicated on the plans, two-wire smoke modules, Silent Knight SK-Zone. All two-wire detectors being monitored must be UL compatible with the module.



DO NOT LOOP WIRE UNDER TERMINALS. BREAK ALL WIRE RUN TO PROVIDE SUPERVISION OF CONNECTIONS. DETECTORS MUST BE UL LISTED COMPATIBLE WITH MODULE. INSTALL DETECTORS PER MANUFACTURER'S INSTALLATION INSTRUCTIONS

Wiring the SK-Zone Module and two-wire conventional detectors, NFPA Style B



DO NOT LOOP WIRE UNDER TERMINALS. BREAK ALL WIRE RUN TO PROVIDE SUPERVISION OF CONNECTIONS. DETECTORS MUST BE UL LISTED COMPATIBLE WITH MODULE. INSTALL DETECTORS PER MANUFACTURER'S INSTALLATION INSTRUCTIONS

Wiring the SK-Zone Module and two-wire conventional detectors, NFPA Style D



This document is not intended to be used for installation purposes. We try to keep our product information up-to-date and accurate. We cannot cover all specific applications or anticipate all requirements. All specifications are subject to change without notice. For more information, contact Silent Knight 12 Clintonville Road, Northford, CT 06472-1610 Phone: (800) 328-0103, Fax: (203)484-7118. For Technical Support, Please call 800-446-6444. www.silentknight.com

MADE IN AMERICA

FORM# 350129 Rev D
© 2013 Honeywell International Inc.