

The Genesis™ (MX-900)

A New Beginning in Remote Technology

The Complete Control Genesis is a unique synthesis of hardware and software engineering. The Genesis achieves a magnificent combination of power and flexibility, simplifying and automating operation of even the most complex system.

The Highlights

- The Genesis offers your clients a user interface that is optimized for one hand operation.
- The Genesis revolutionizes user interfaces with its ergonomic design. Indents in the body enable users to locate the most frequently used buttons by feel.
- The screen labeled buttons always display exactly the buttons the client needs, no more and no less.
- Clear, easy to read screen labeled buttons with up to seven characters each, making it simple to see which button does what, at a glance.
- The hard buttons are all labeled in English, without symbols your clients can't remember how to use.
- The bright, blue backlighting ensures that the Genesis can be used in the total darkness of a home theater with one touch to the LIGHT button.

Watch/Listen Automation Speeds Client Training

Instead of training your clients to look for a cryptic symbol or remember an arcane button name when they want to watch or listen to something new, your installers simply say:

"When you want to watch something on TV, simply press the WATCH button and select what you'd like to watch. Once you've selected an activity like watching cable, satellite or a DVD movie, I've custom programmed the Genesis to turn on everything you need and configure your home theater completely for you. Likewise, if you want to simply listen to a CD or the radio, press the LISTEN button and select what you'd like to listen to. The macro programming I've done will take care of everything for you. It's that easy!"



COMPLETE
CONTROL



UNIVERSAL®
remote control

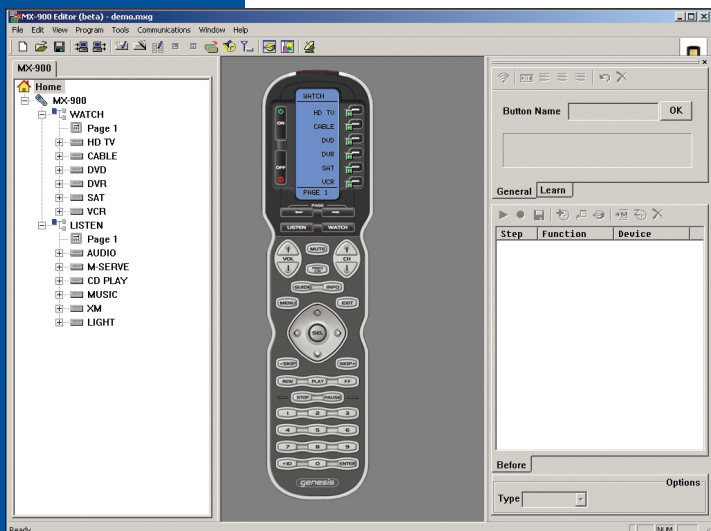
Fast USB Downloads

Windows Based PC Software

MX-900 Editor revolutionizes the professional programmers world. Because it is completely text based, a custom configuration for the most demanding client can be set up in a fraction of the time it takes with any other control system.

The Genesis' programming architecture removes all barriers to quickly achieving exactly the result you want. At last you can:

- Drag and drop a single discrete code from the IR database without creating a device for it or you can SAVE ALL for a new device in one click.
- Program as many page jumps as you want in a macro. Thus, status messages during a macro take a few seconds to program.
- Hide or Reveal pages of commands with one click without rearranging of page order.
- Program any button or macro to signal completion with a Beep.
- Instantly program ALL of the Power ON and Power OFF buttons to be SYSTEM ON and SYSTEM OFF macros via Punch Through.



Optional RF "No Rules" Operation

Like all Complete Control remotes, the Genesis, in combination with a Complete Control RF Base Station, can control your system without being in line-of-sight of the equipment. Either the MRF-300 multi-zone or the MRF-250 RF Base Station is compatible with the Genesis. The Genesis offers complete RF addressability, enabling it to control up to 90 identical components in up to 15 equipment locations throughout a house. It can also be configured to use line of sight via conventional IR operation.

2. The RFX-150 RF Sensor can be freely positioned for optimal reception.



1. The Genesis sends radio waves in every direction, so you don't have to point the remote anymore.



3. The MRF-300's built-in Front Blaster sends commands to components in the same cabinet space as the MRF-300.

4. Self-adhesive "Flashers" affix to the Infrared sensors on the front panels of your components. The Flashers relay commands to components out of sight of the MRF-300's rear flasher line outputs via their 10 foot cables. Uniquely, the MRF-300 can also connect to rear panel IR Inputs via its adjustable IR Line Outputs.

Specifications

Memory: 8 Megabits of Flash Memory
(for User Configuration)

Devices: Flexible, typically up to 40 Devices

Pages: Flexible, typically up to 40 Pages each Device

Learning Capability: Standard frequencies
(15kHz to 460kHz)

Macro Capability: Up to 255 steps each,
however nesting is allowed

IR Range (Line-of-Sight via Infrared):

30-50 feet, depending on the environment

RF Range (Radio Frequency):

50 to 100 feet, depending upon the environment

RF Frequency: 418 MHz

Weight: 14 oz. (with batteries)

Size: 8" x 2.25" x 1.25"

COMPLETE
CONTROL™

UNIVERSAL®
remote control

500 Mamaroneck Avenue, Harrison, NY 10528 Phone: (914) 835-4484 Fax: (914) 835-4532

www.universalremote.com