

Preliminary Specifications: VTD-THD5R3

Transcendent 5.0 Megapixel Indoor/Outdoor 4-IN-1 HDA Dome Camera w/16 High Power Covert IR LED Illumination



FEATURES:

- 1/2.5" 5.0 Megapixel Progressive Scan CMOS Sensor
- High Definition Analog (HDA): HD-TVI & AHD: 5.0 MegaPixel / CVI: 4.0 MegaPixel / CVBS: 960H Video Output
- 3.6mm Fixed Lens
- 16 Infrared LED's with 100' IR Range
- Digital Wide Dynamic Range (D-WDR)
- True Mechanical Day/Night function by ICR
- 2D-DNR Noise Reduction
- IP66 Weather Resistance & IK10 Impact Rating
- Supports Up The COAX Control
- Over 1500' HD Video Transmission (Depending on cable characteristics and integrity)
- Optional Wall Mount (VT-TWMT3) & Junction Box (VT-TJB03A) Mounts Available
- 12VDC Operation
- 3 Year Warranty

Transcendent Series High Definition HD-TVI, AHD, CVI, and CVBS 4-IN-1 Cameras deliver up to 5.0 MegaPixel resolution and offer unprecedented performance and value.

These simple, easy to install, attractively styled, analog HD Cameras transmit over your existing Coaxial cable at distances up to 1500'.

5-In-1 Digital Video Recorders Supporting HD-TVI / AHD / CVI / IP / 960H Cameras



Transcendent VT-TR5HA Series 4, 8, or 16 Channel 5-In-1 Digital Video Recorders Support HD-TVI / AHD / CVI / 960H Cameras as well as IP Cameras with Up to 5 Megapixel Recording & Playback.



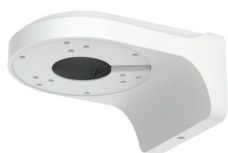
(888) VITEK-70 | WWW.VITEKCCTV.COM
28492 Constellation Road Valencia, CA 91355

An Eye On
Innovation

Preliminary Specifications: VTD-THD5R3

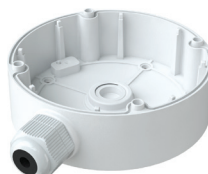
Transcendent 5.0 Megapixel Indoor/Outdoor 4-IN-1 HDA Dome Camera w/16 High Power Covert IR LED Illumination

Specifications	
Image Sensor	1/2.5" 5.0 Megapixel Progressive Scan CMOS Sensor
Signal System	PAL/NTSC
Effective Pixels	2592 x 1944
Resolution	HD-TVI & AHD: 5.0 MegaPixel / CVI: 4.0 MegaPixel / CVBS: 960H
Video Output	HD-TVI / AHD / CVI / CVBS (Selectable)
Frame Rate	20fps
Lens	3.6 mm (Fixed)
Day/Night	True Day/Night by ICR
Min. Illumination	Color: 0.001 lux@F1.2, AGC ON / B/W: 0 lux (with IR ON)
IR LEDs	16 Dynamic Intensity LEDs
IR Distance	100'
S/N Ratio	≥52dB (AGC Off)
WDR	Digital WDR
Defog	YES
Digital Noise Reduction (DNR)	2D-DNR
White Balance	Auto (AWB)
BLC	YES
Up the COAX Control (COC)	YES
Transmission Distance	Up to 1500' (Depending on cable characteristics & integrity)
Power Input	12VDC
Power Consumption (12VDC)	IR On: 120mA / IR Off: 360mA
Weather Resistance	IP66 / IK10
Operation Conditions	-4 ~ 122 / 10% ~ 90% Humidity
Weight	21.34 oz. / 1.33 lbs. / 605g
Dimensions	4.57" x 3.58" (116mm×91mm) Dia x H



VT-TWMT3

Optional Wall Mount for use with Select Transcendent Vandal Dome Cameras



VT-TJB03A

Optional Junction Box for Cable Management for use with Select Transcendent Vandal Dome Cameras