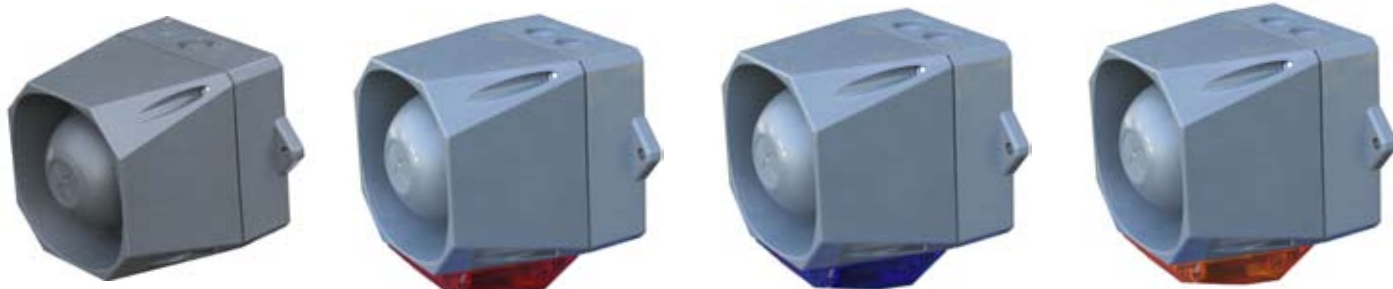


Series MIN-T Audible and Audible Strobe



Description:

The Series MIN Audible and Audible Strobe is a versatile and rugged alarm designed for indoor/outdoor environments or areas where there is a requirement for a physically robust and well protected unit. The series comes complete with 'normally closed' contacts that go open when the alarm is removed from its base to detect tampering.

Features:

- Tamper contacts
- Low current draw
- Audible 7 to 56 mA
- Audible/Strobe 100 to 393 mA
- Up to 113 dB output
- Horn & Horn Strobe Models
- 32 tones, dip switch selectable
- 2 prioritized inputs for tones
- 9 to 60 VDC
- 13 to 158 F (-25°C ~ +70°C)
- NEMA 4 (IP 66)
- 23AWG ~ 14AWG
- 1 Hz flash rate - 40,000 candle power strobe
- Color: grey
- Strobe available in amber, red or blue

Ordering Information:

Model Number	Order Code	Description
MIN-T	9087	Audible Signal, 32 Tones, 9-60 VDC, Grey
MIN-TA	9068	Audible Strobe, 32 tones, 9-60 VDC, Tamper, Amber Lens, Grey
MIN-TR	9069	Audible Strobe, 32 tones, 9-60 VDC, Tamper, Red Lens, Grey
MIN-TB	9086	Audible Strobe, 32 tones, 9-60 VDC, Tamper, Blue Lens, Grey



WE ENCOURAGE AND SUPPORT NICET CERTIFICATION
3 YEAR WARRANTY
MIN-T 03/08

NJ Location
273 Branchport Ave.
Long Branch, NJ 07740
P: 800-631-2148
F: 732-222-8707
www.coopernotification.com

FL Location
7565 Commerce Ct.
Sarasota, FL 34243
P: 941-487-2300
F: 941-487-2389

VA Location
P: 877-459-7726
F: 703-294-6560

Specification Information:

Tone 1	Tone 2	Switch Settings	Sound	12 VDC			24 VDC			48 VDC					
				Audible mA	Audible dB(A)	Audible Strobe mA	Audible mA	Audible dB(A)	Audible Strobe mA	Audible mA	Audible dB(A)	Audible Strobe mA			
1	14	1111	800 & 970Hz	2Hz (250ms~250ms)	7	92	382	95	100	197	102	19	101	101	104
2	14	1110	800 & 970Hz	7Hz (7/s)	7	93	379	95	103	198	103	18	102	103	104
3	14	1101	800 & 970Hz	1Hz (1/s)	7	95	377	97	105	198	105	18	103	99	106
4	14	1100	2850Hz	Steady	18	97	385	100	28	223	107	53	106	185	109
5	4	1101	2400 ~ 2850Hz	7Hz	19	102	376	104	32	111	224	57	111	178	113
6	4	11010	2400 ~ 2850Hz	1Hz	19	104	378	105	33	112	223	57	112	156	114
7	14	11001	300 ~ 1200Hz	3s Sweep, 0.5s silence, then repeat	6	96	364	97	11	106	197	18	104	99	106
8	14	11000	1200 ~ 500Hz	1Hz	8	96	375	97	15	105	118	22	104	165	106
9	4	10111	2400 & 2850Hz	2Hz (250ms~250ms)	17	100	393	101	30	109	220	54	108	158	110
10	14	10110	970Hz	0.5Hz (1s On / 1s Off)	5	93	366	95	9	102	195	13	101	96	104
11	14	10101	800 & 970Hz	1Hz (500ms~500ms)	6	92	364	95	13	102	195	19	101	137	104
12	4	10100	2850Hz	0.5Hz (1s On / 1s Off)	10	98	368	100	13	105	200	26	107	123	109
13	14	10011	970Hz	0.8Hz (250ms On / 1s Off)	2	92	356	94	6	102	188	8	101	91	104
14	14	10010	970Hz	Steady	7	93	361	95	14	102	198	21	102	99	104
15	14	10001	554 & 440Hz	100ms ~ 400ms	9	97	362	98	17	105	200	27	104	156	106
16	16	10000	660Hz	3.3Hz (150ms On / 150ms Off)	4	92	357	93	8	101	195	13	100	89	102
17	17	01111	660Hz	0.28Hz (1.8s On / 1.8s Off)	4	93	356	94	7	102	200	13	101	148	103
18	18	01110	660Hz	0.05Hz (13s Off / 6.5Hz On)	3	93	367	94	6	102	189	9	101	143	103
19	19	01101	660Hz	Steady	6	93	356	94	12	102	198	16	101	99	103
20	20	01100	554 & 440Hz	0.5Hz (1s On / 1s Off)	8	96	359	98	15	105	200	24	104	137	106
21	21	01011	660Hz	1Hz (500ms ~ 500ms)	4	92	354	94	8	102	193	11	101	91	103
22	14	01010	2850Hz	4Hz (150ms On / 100ms Off)	12	97	361	100	19	104	210	37	105	140	109
23	14	01001	800 ~ 970Hz	50Hz	7	93	354	94	13	103	197	19	101	97	104
24	4	01000	2400 ~ 2850Hz	50Hz	19	102	368	103	32	110	202	56	110	188	112
25	25	00111	970Hz	3 x 500ms pulses followed by 1.5s silence then repeat	4	93	358	95	7	102	194	13	101	130	104
26	26	00110	970 & 800Hz	3 x 500ms pulsed sweep followed by 1.5s silence	4	94	354	95	7	104	196	8	102	143	105
27	27	00101	4000Hz	3 x 500ms pulsed two tone followed by 1.5s silence	4	93	363	94	7	102	190	12	101	95	104
28	10	00100	800 & 970Hz	2Hz (250ms ~ 250ms)	7	93	356	95	13	102	200	19	101	160	104
29		00011	990 & 650Hz	2Hz (250ms ~ 250ms) (Symphoni Tones)	9	96	359	98	21	105	210	33	104	112	106
30	510Hz	00010	510 & 610Hz	2Hz (250ms ~ 250ms) (Squashni Micro Tones)	9	96	356	98	17	104	202	26	104	116	106
31	31	00001	300 ~ 1200Hz	1Hz	12	99	359	100	21	107	211	35	106	174	107

Note: dB(A) @ 1 Meter